



ALASKA NATIVE
TRIBAL HEALTH
CONSORTIUM

Stable Foundations – Active Cooling of Thermosiphons

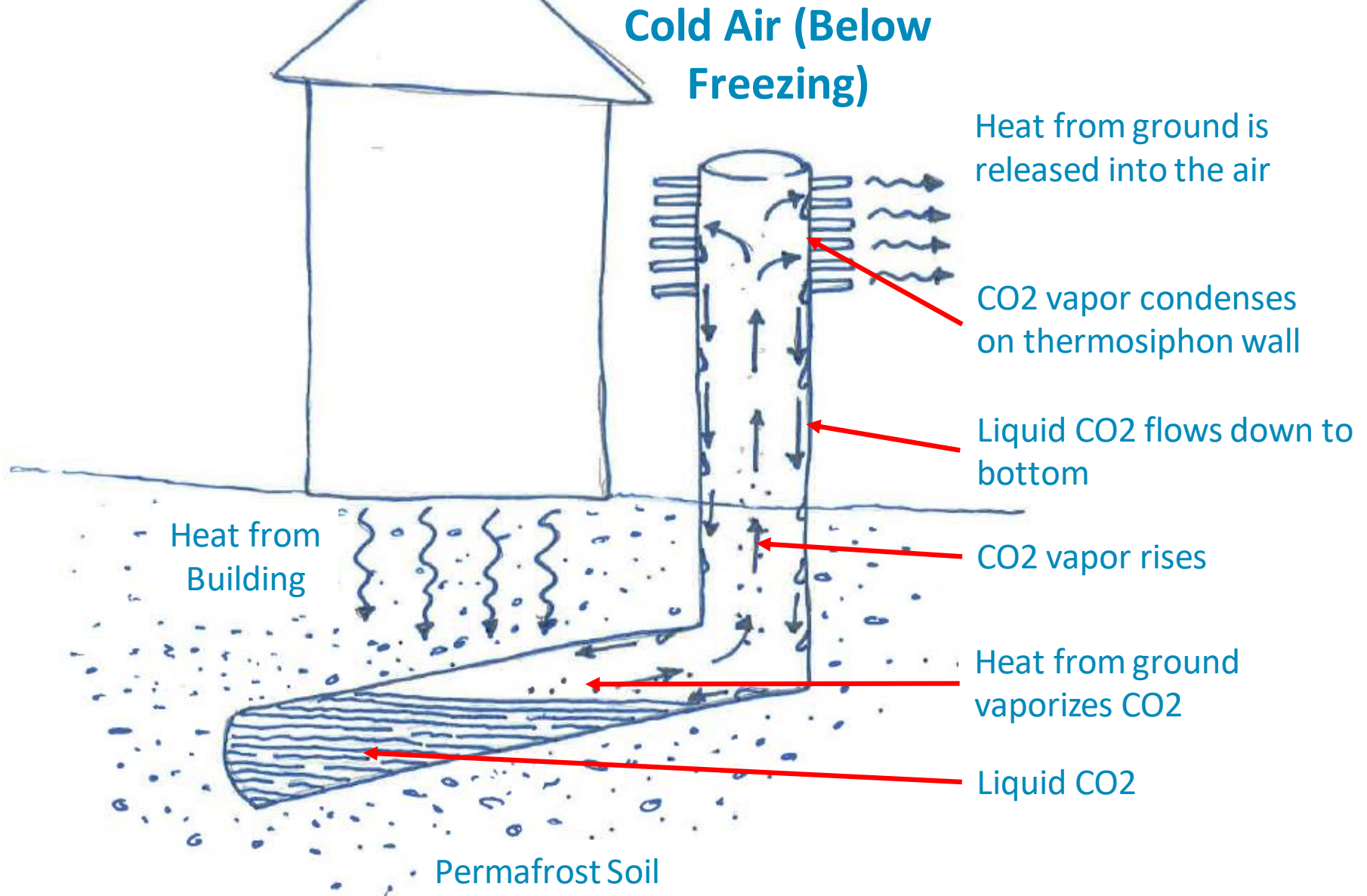
LEO Network
January 21, 2020

Bailey Gamble, Mechanical Engineer II

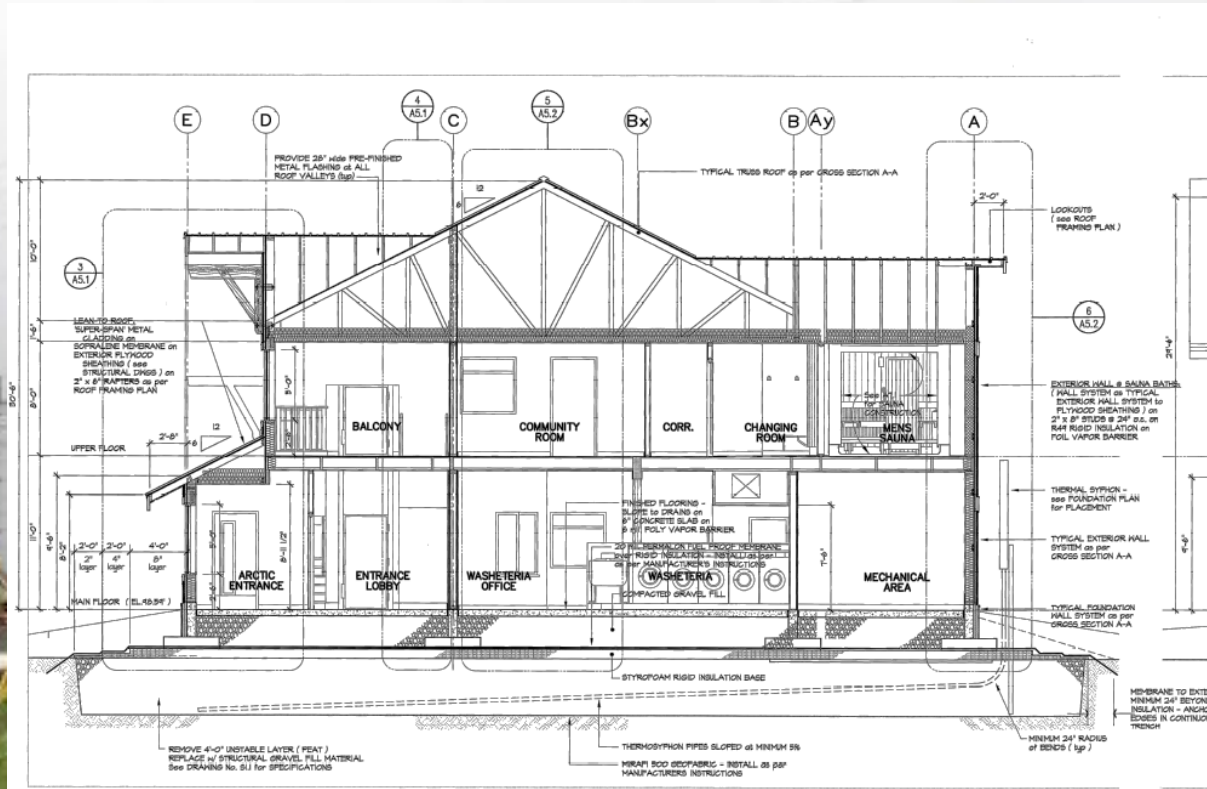


562

Thermosiphon Passive Cooling



Quinhagak Community Buildings Settling



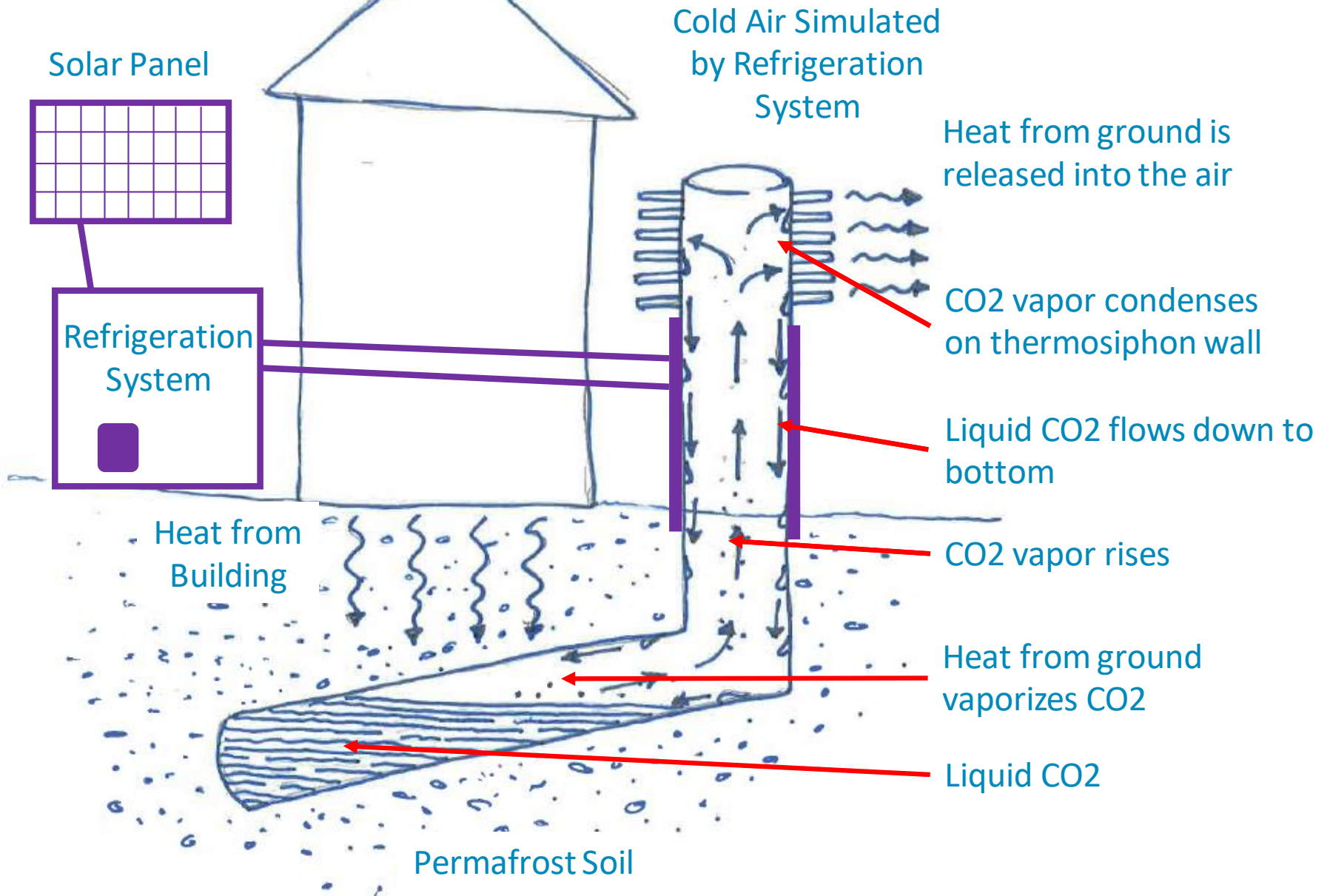
- Mechanical room warmer than expected
- Exhaust vent warming thermosiphon condenser fins
- Summers significantly longer than design assumption



Bethel Weather

	Freezing Index	Thawing Index	Days of thaw
Hartman/ Johnson	3500 °F-days	2500 °F-days	170
1997	3460 °F-days	3410 °F-days	195
1998	3470 °F-days	2700 °F-days	198
1999	4220 °F-days	2600 °F-days	164
2000	4000 °F-days	2580 °F-days	201
2001	2030 °F-days	2590 °F-days	168
2002	3750 °F-days	3300 °F-days	207
2003	2230 °F-days	3210 °F-days	212
2004	3350 °F-days	3630 °F-days	214

Active Cooling of Thermosiphons



Active Cooling Options

Centralized chiller/heat exchangers

- Off-the-shelf
- Power to central chiller unit
- Modification of thermosiphon
- Vulnerable refrigerant lines
- Require technician to service
- Larger, complex renewable system requirements
- \$400,000-\$500,000 installed (not including renewable energy system)

Individual refrigeration collars

- New – R&D still needed
- Power to each unit
- Modular - Can dismantle for easier transport
- Keep refrigerant lines contained
- Can be serviced by local operators
- Small enough to be powered by simple renewable systems
- \$250,000 - \$300,000 installed (10 units, not including renewable energy system)

Thermosiphon Refrigeration Collars (TRC)

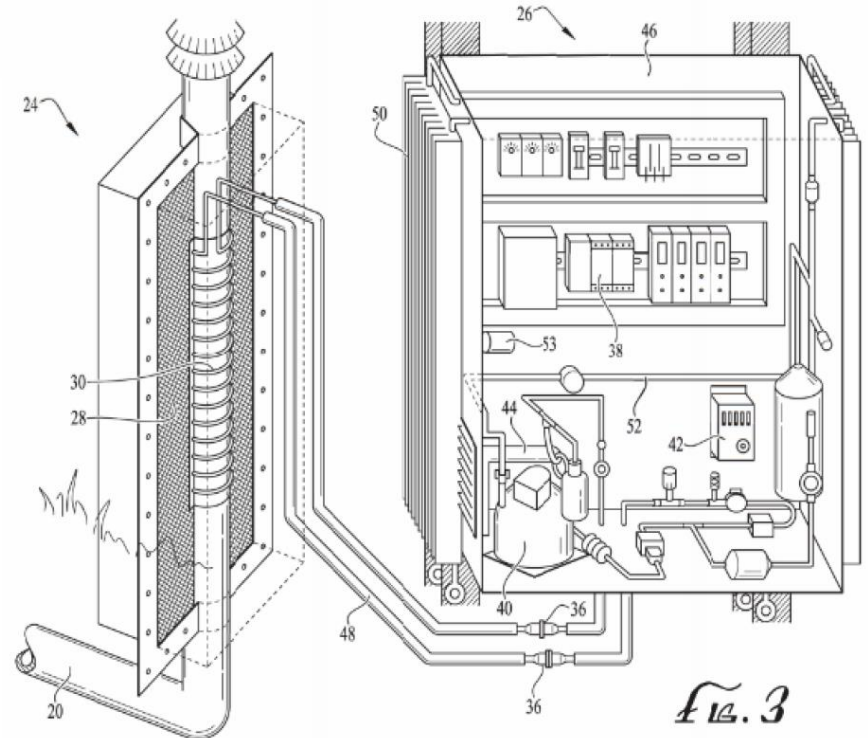
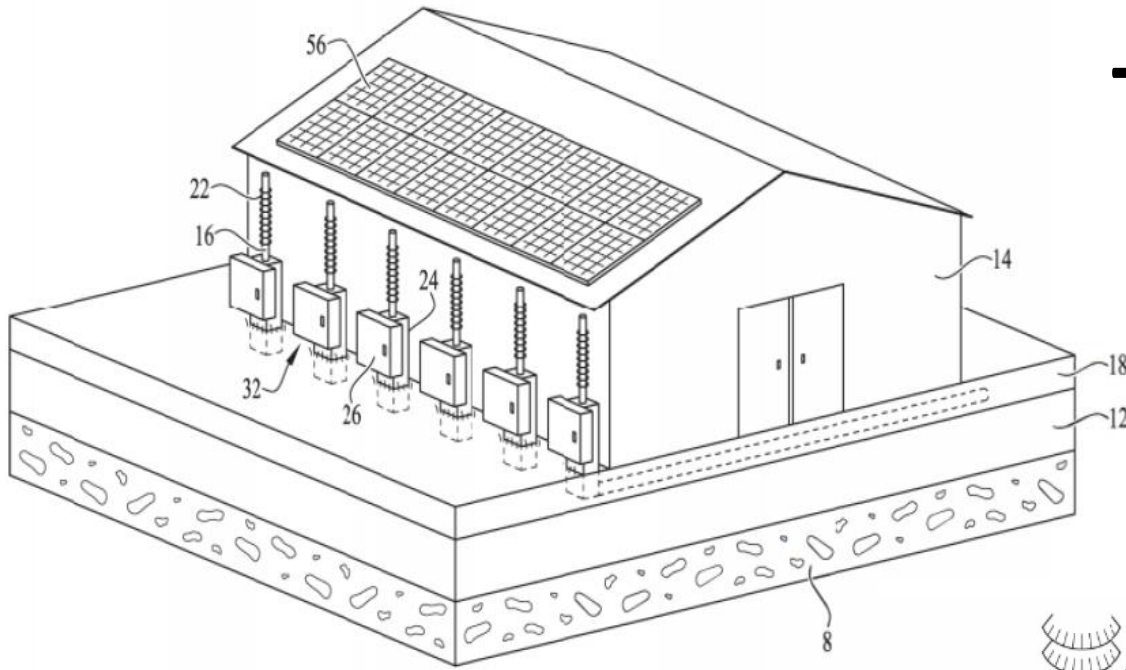
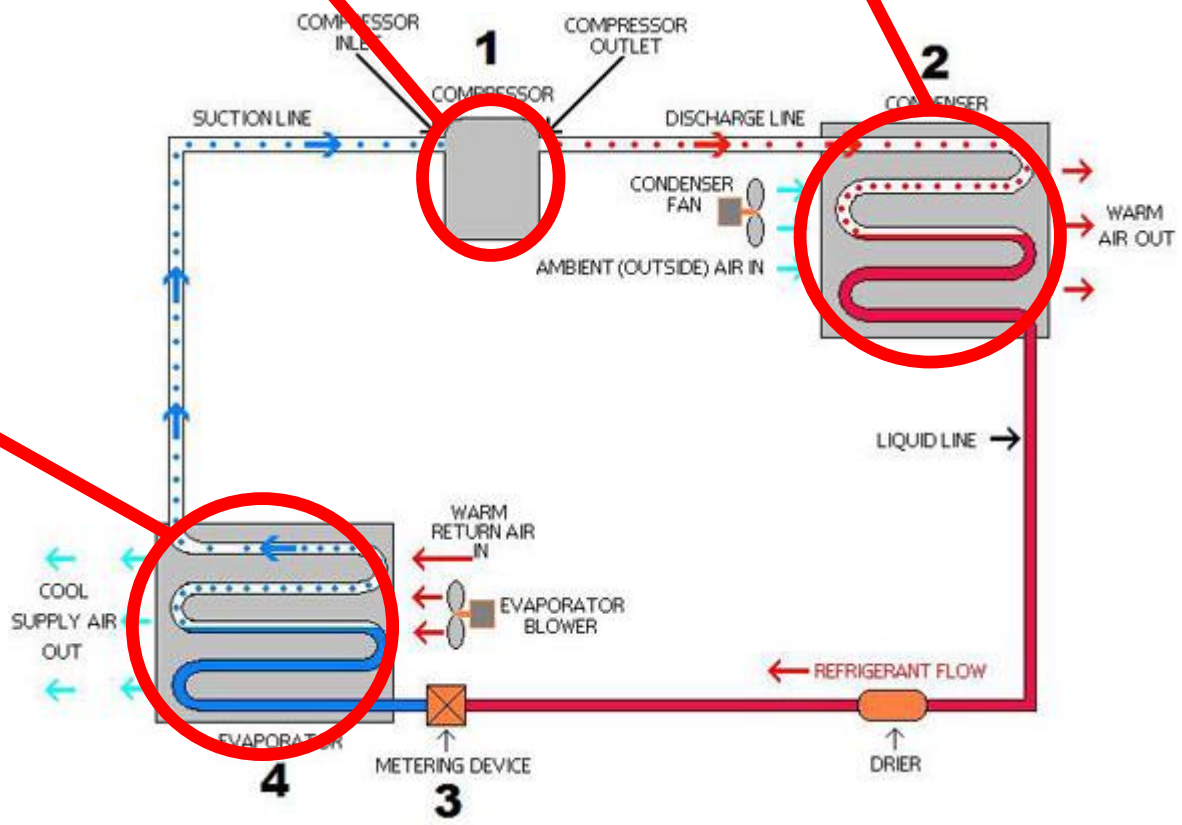
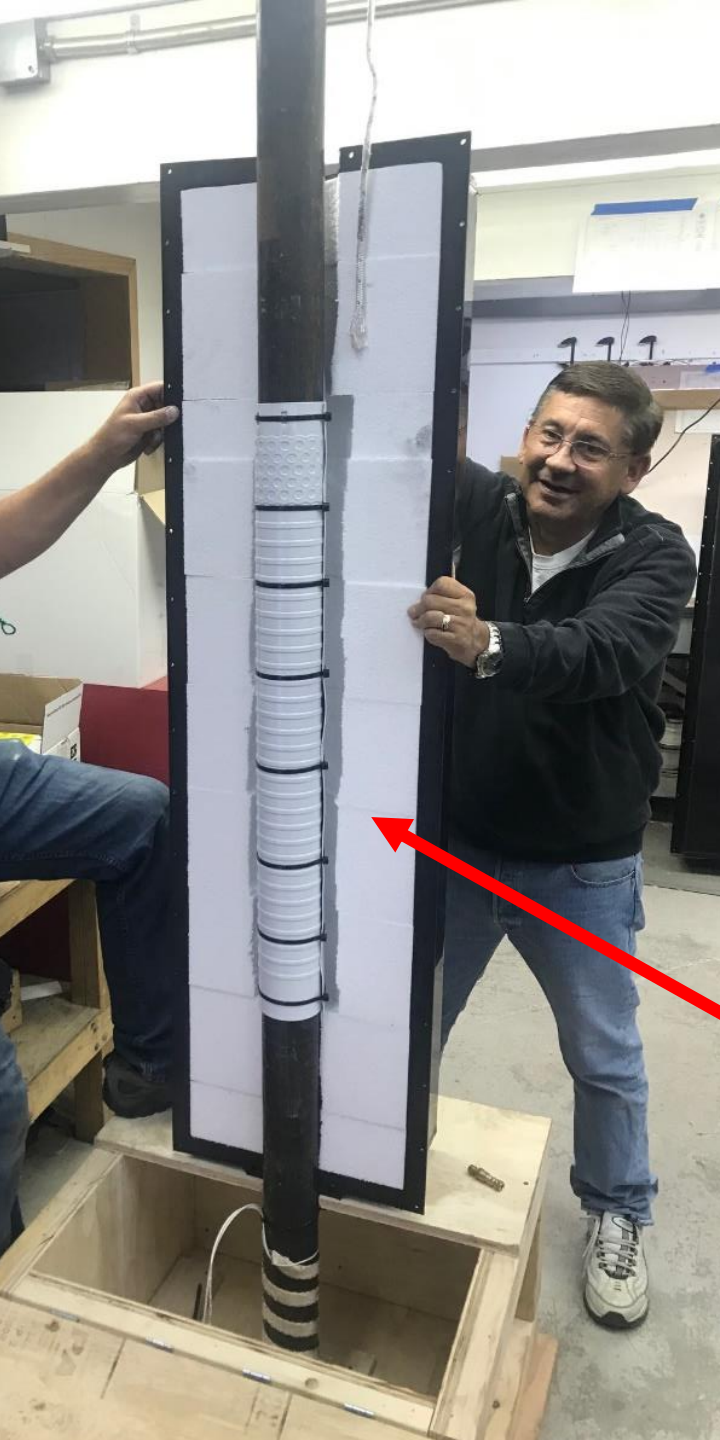


FIG. 3





Current Status

- First prototype installed at CCHRC in Fairbanks
- Logging ground and system temperature, pressure, power draw data
- Dialing in controls and operational setpoints
- Identifying vulnerabilities and opportunities for improvement



Next Steps

Phase 2: Finalize Design

- Apply lessons learned from version 1 to build an improved version.
- Optimize renewable integration.

Phase 3: Field Deployment

- Fabricate batch of 10 units
- Install refrigeration collars and solar array in rural Alaska
- Monitor and evaluate performance

Questions

- In which locations will operating the TRC with renewables alone be enough to maintain frozen ground and protect infrastructure?
- What is the extent of the need?
 - Locations where thermosiphons are present and
 - Settling foundations are observed
 - Changes in permafrost conditions are observed
 - Important to catch buildings BEFORE foundations begin to thaw

A large industrial facility, possibly a power plant or manufacturing plant, with several yellow machinery units on tracks. In the foreground, two blue barrels are stacked on a wooden pallet. The background shows complex piping and structural elements.

Thank you to Tashina Duttler, Will Fraser, John Warren, James Anderson, Jo Nelson, ARUC and DEHE leadership for helping make this project happen

Thank you all for listening!

Bailey Gamble
Mechanical Engineer II
bbgamble@anthc.org
(907) 729-4501