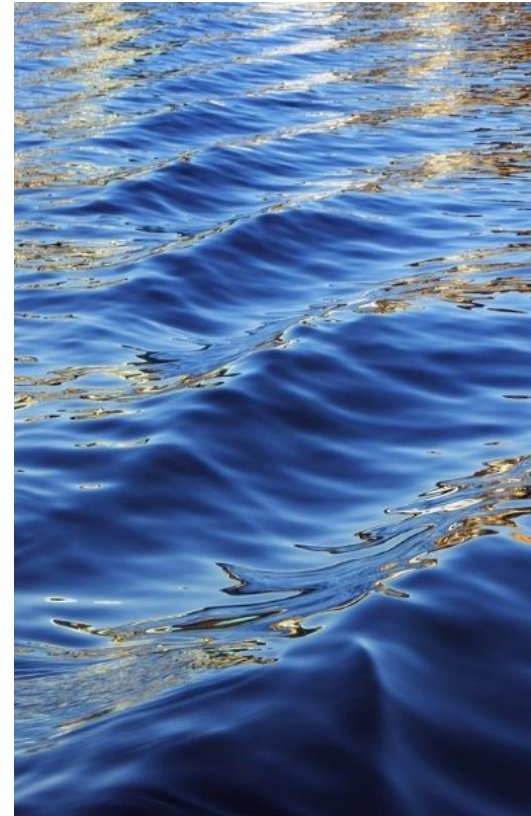
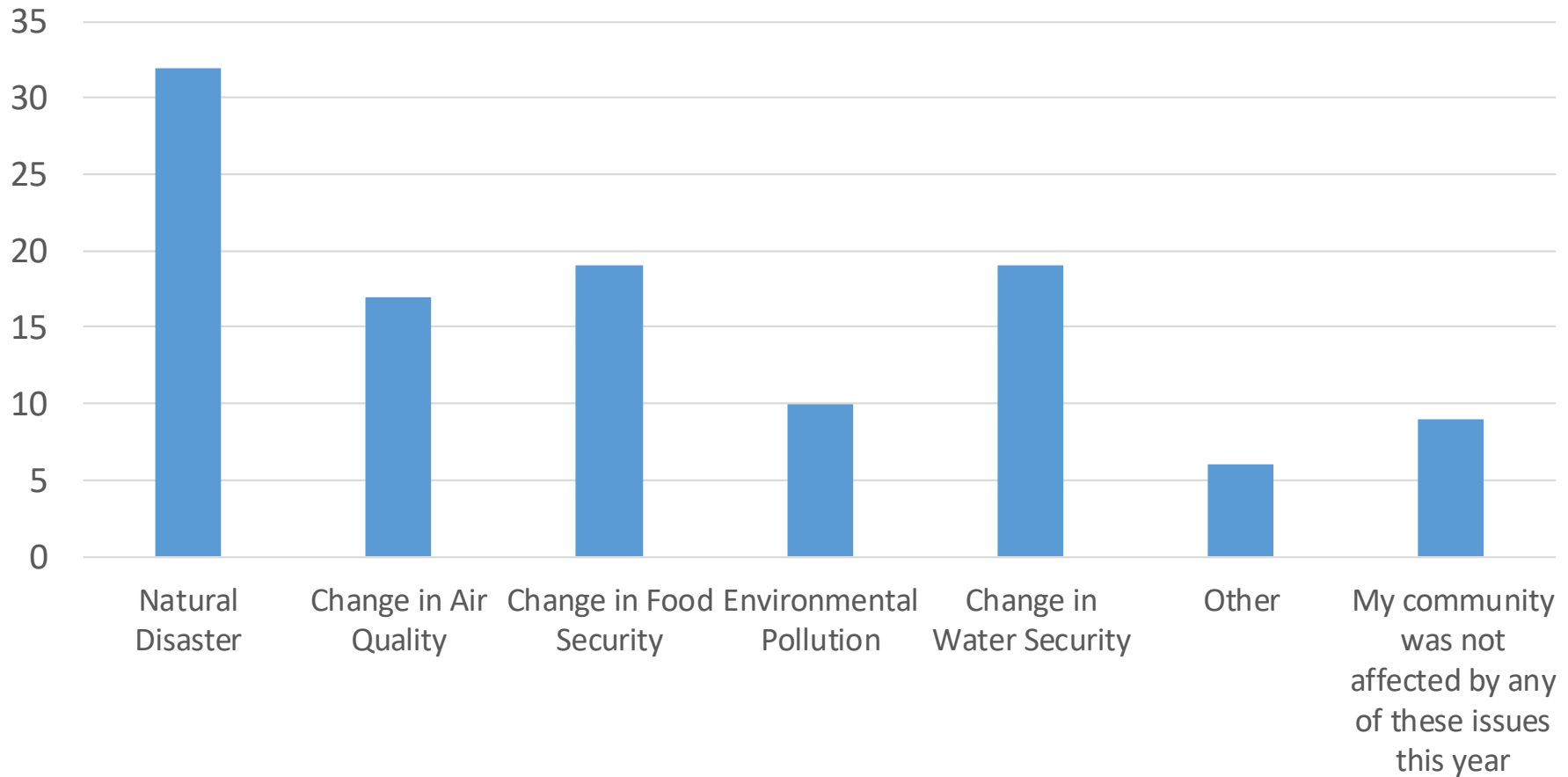


# ATCEM Environmental Survey

- What is happening?
- What are we doing?
- What resources do we need to be successful?



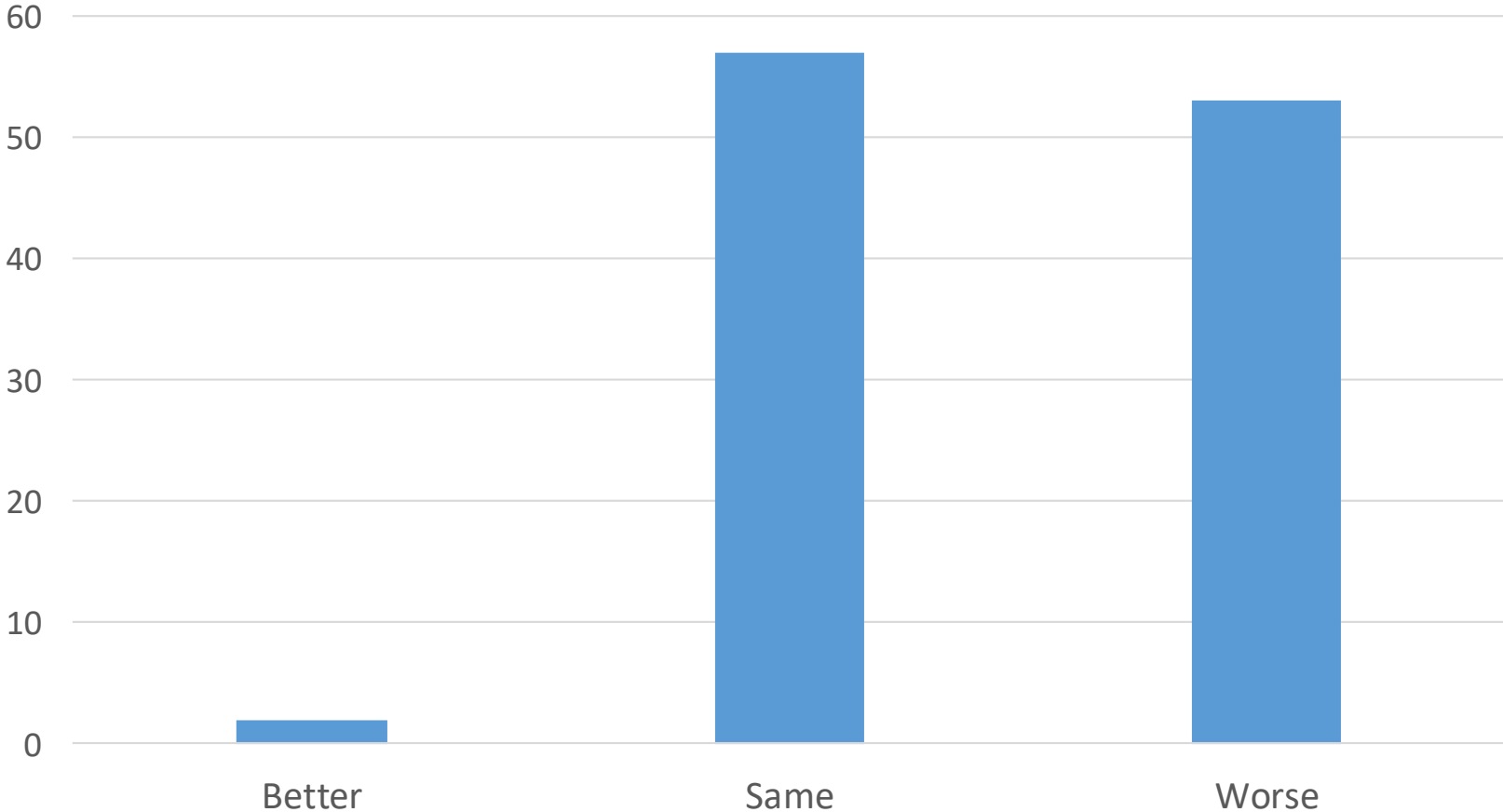
# Over the past year, what environmental health issues have affected your community the most?



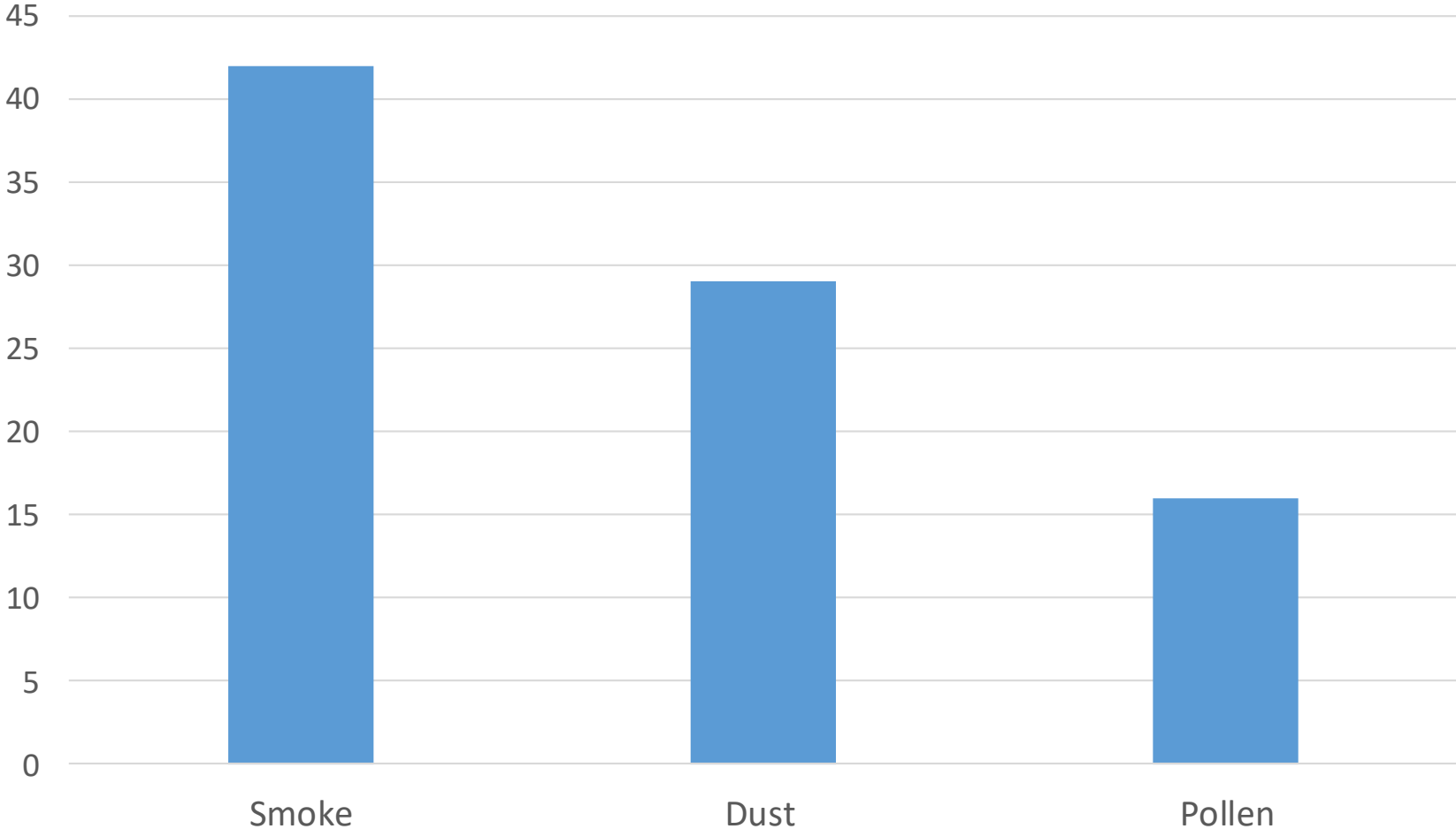
# Change in Air Quality



Over the past year, how would you rate your outdoor air quality?



# Over the past year, what type of air quality issues did you experience?



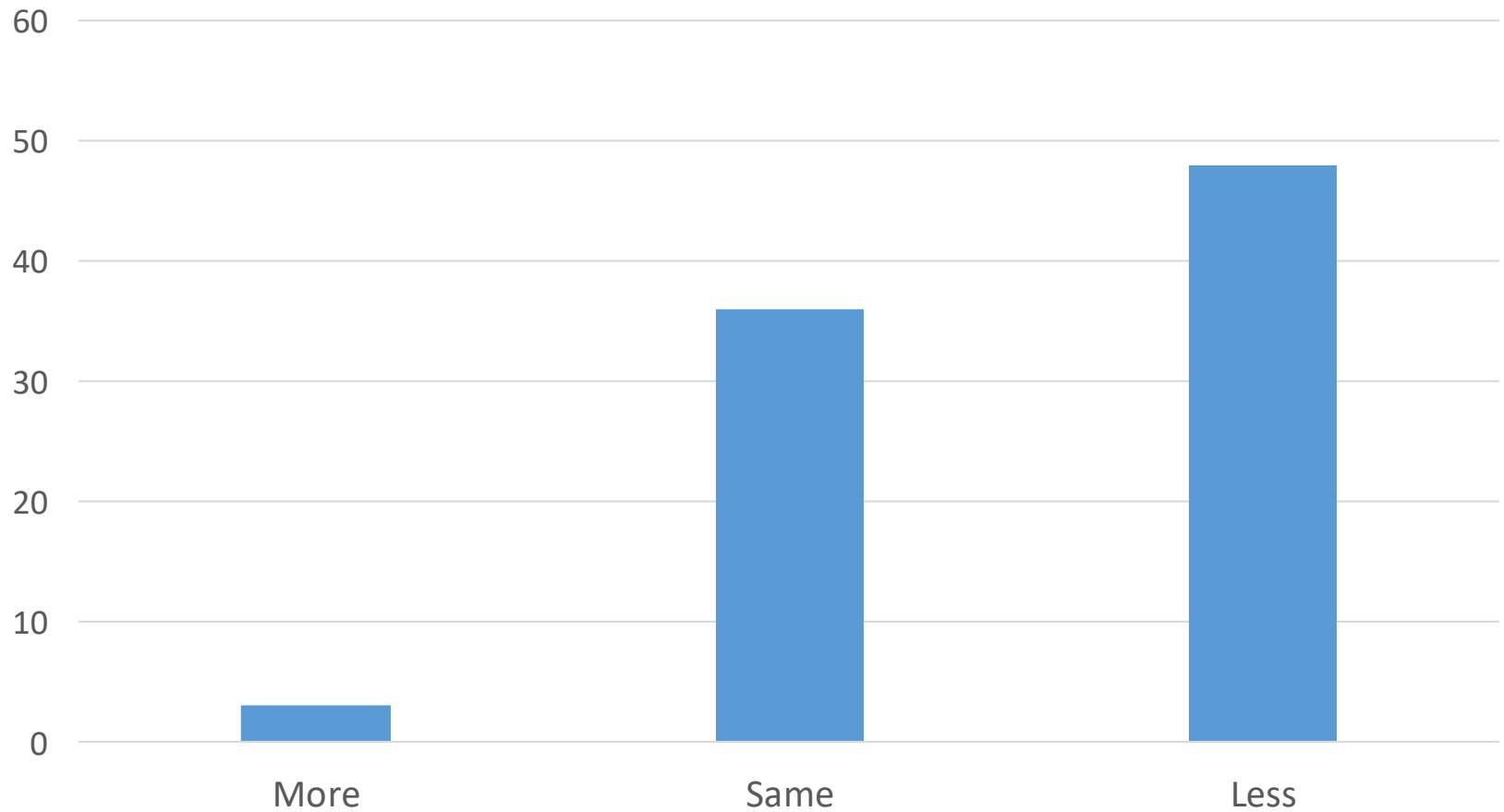


# Change in Subsistence



Photo credit: Augusta Edmund - AlakanukA

# Over the past year, how was your community's subsistence harvest?





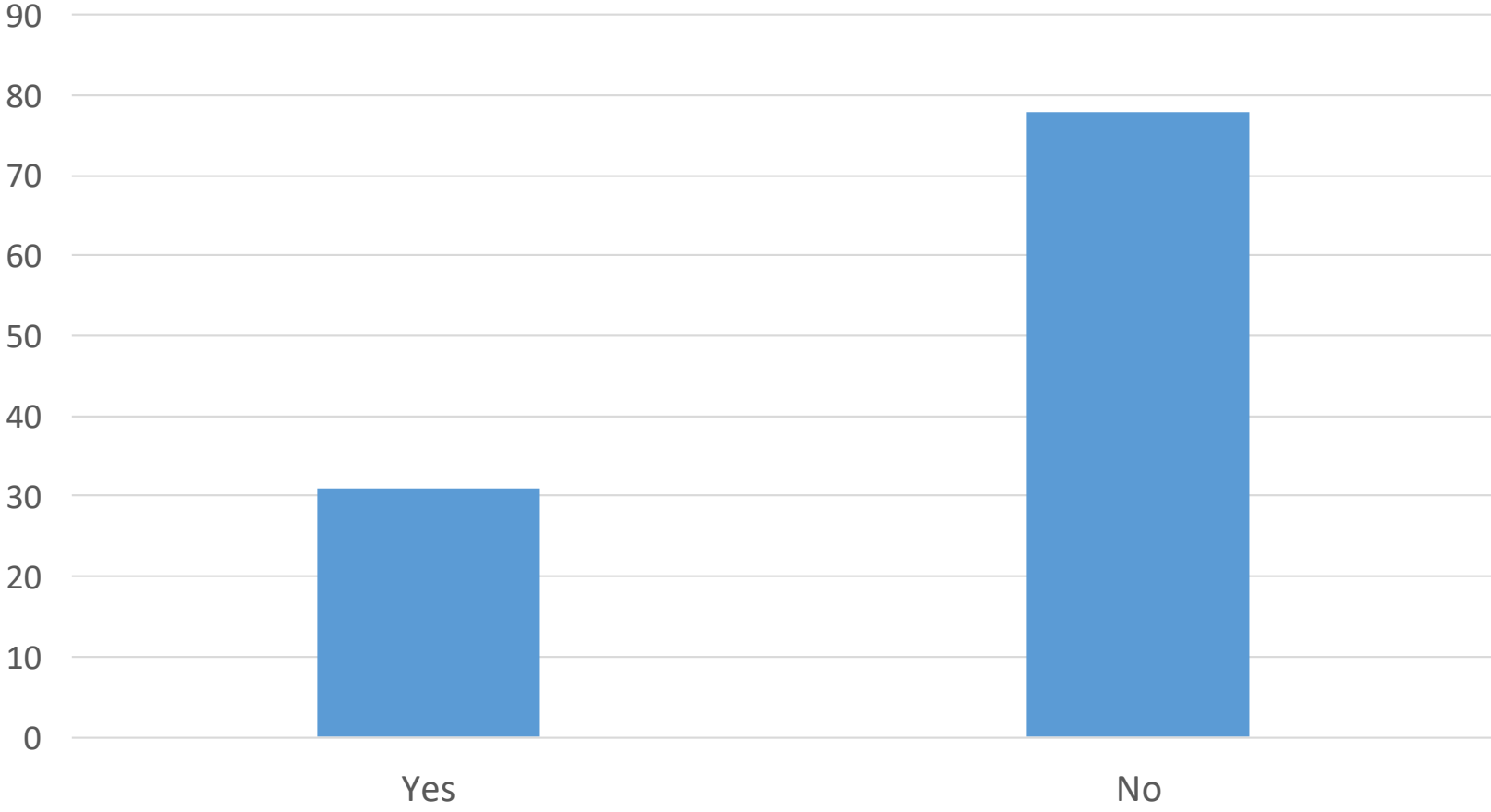
# Pollution Events



Photo Credit: US Army Corps of Engineers



# Is your community dealing with the effects of a pollution event?

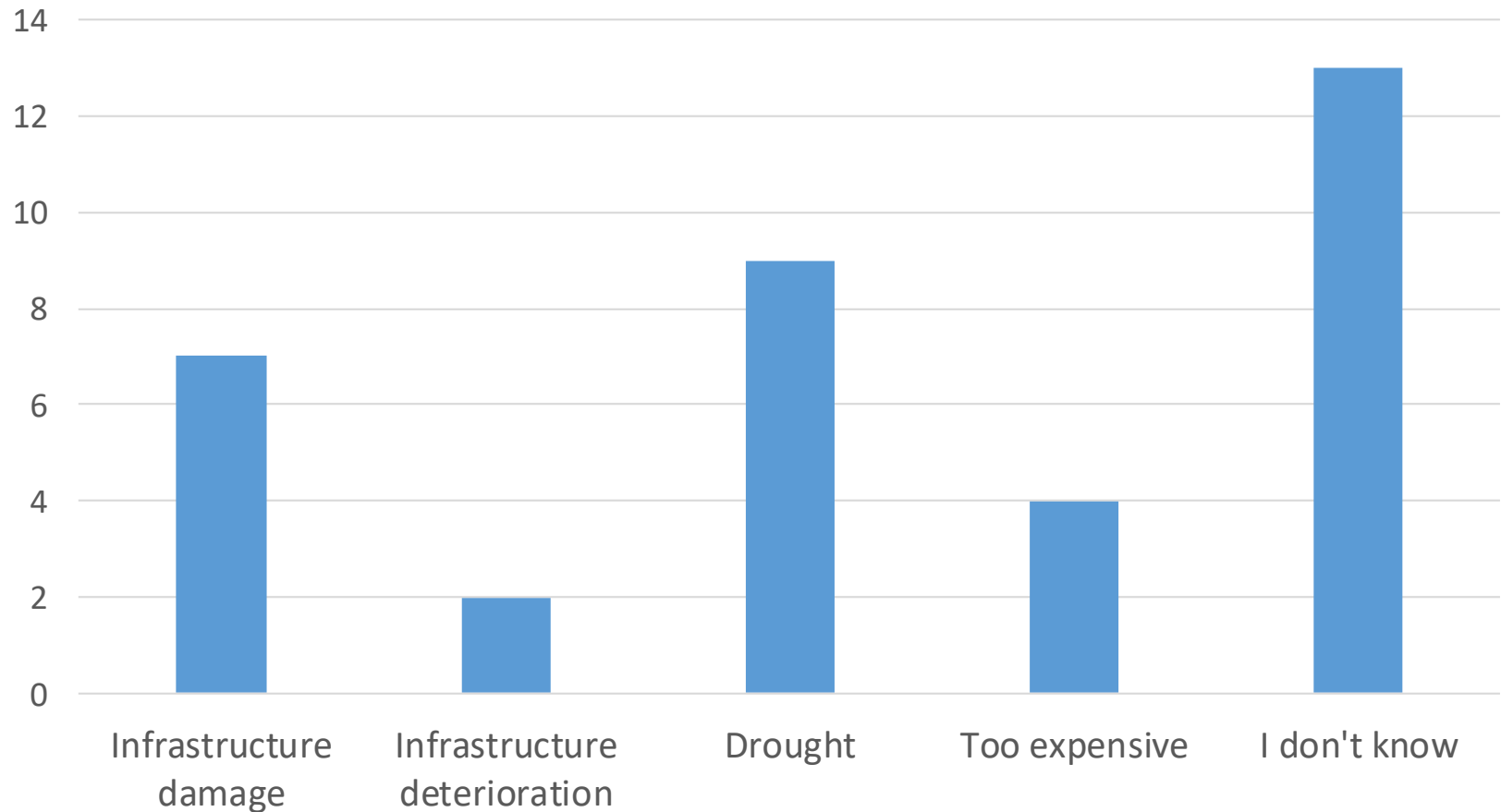


# Change in Household Water Service



Photo credit: Paul Walton - Noatak

Over the past year, did any of the following affect household water use in your community?



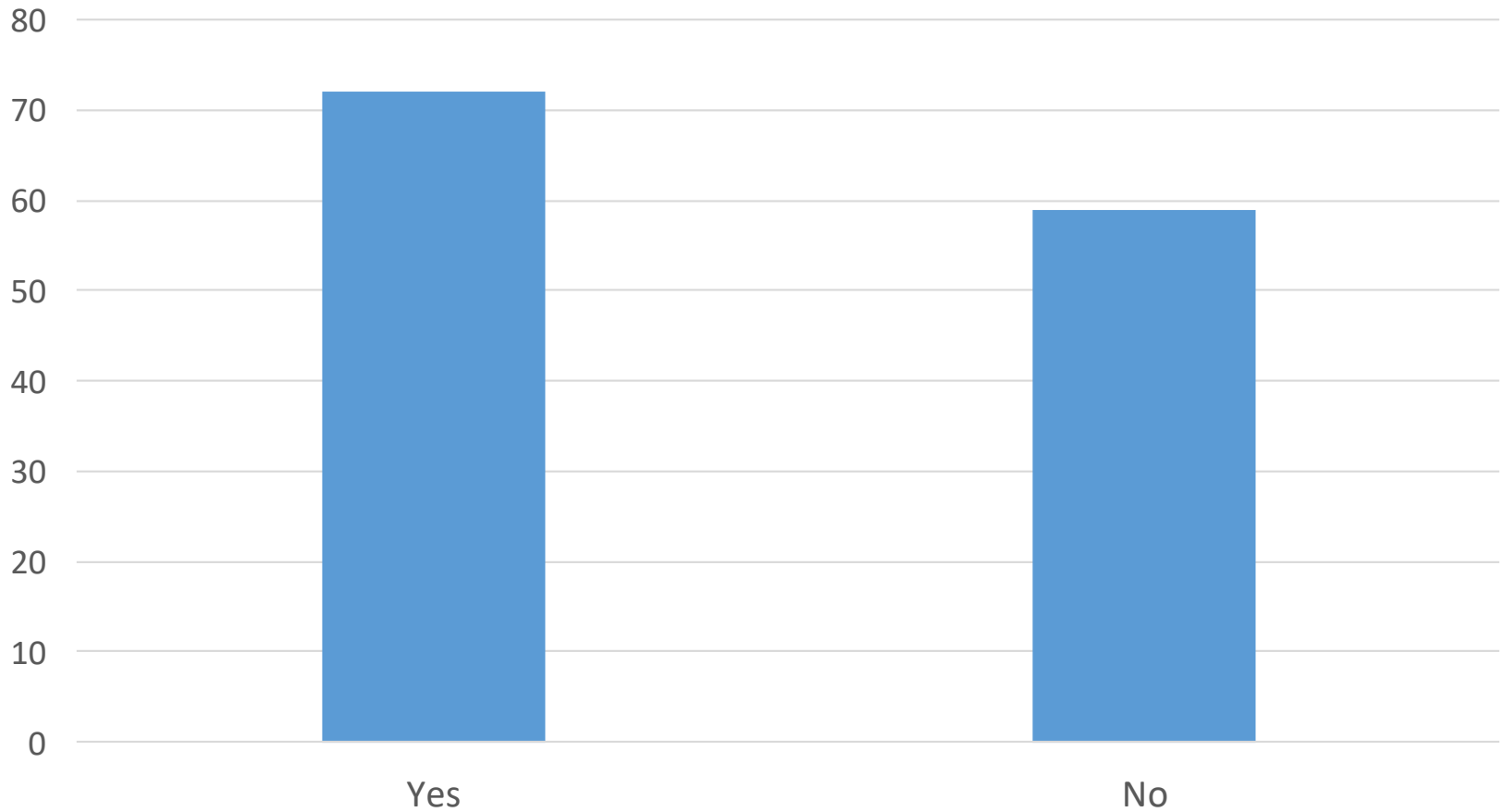


# Infrastructure Damage

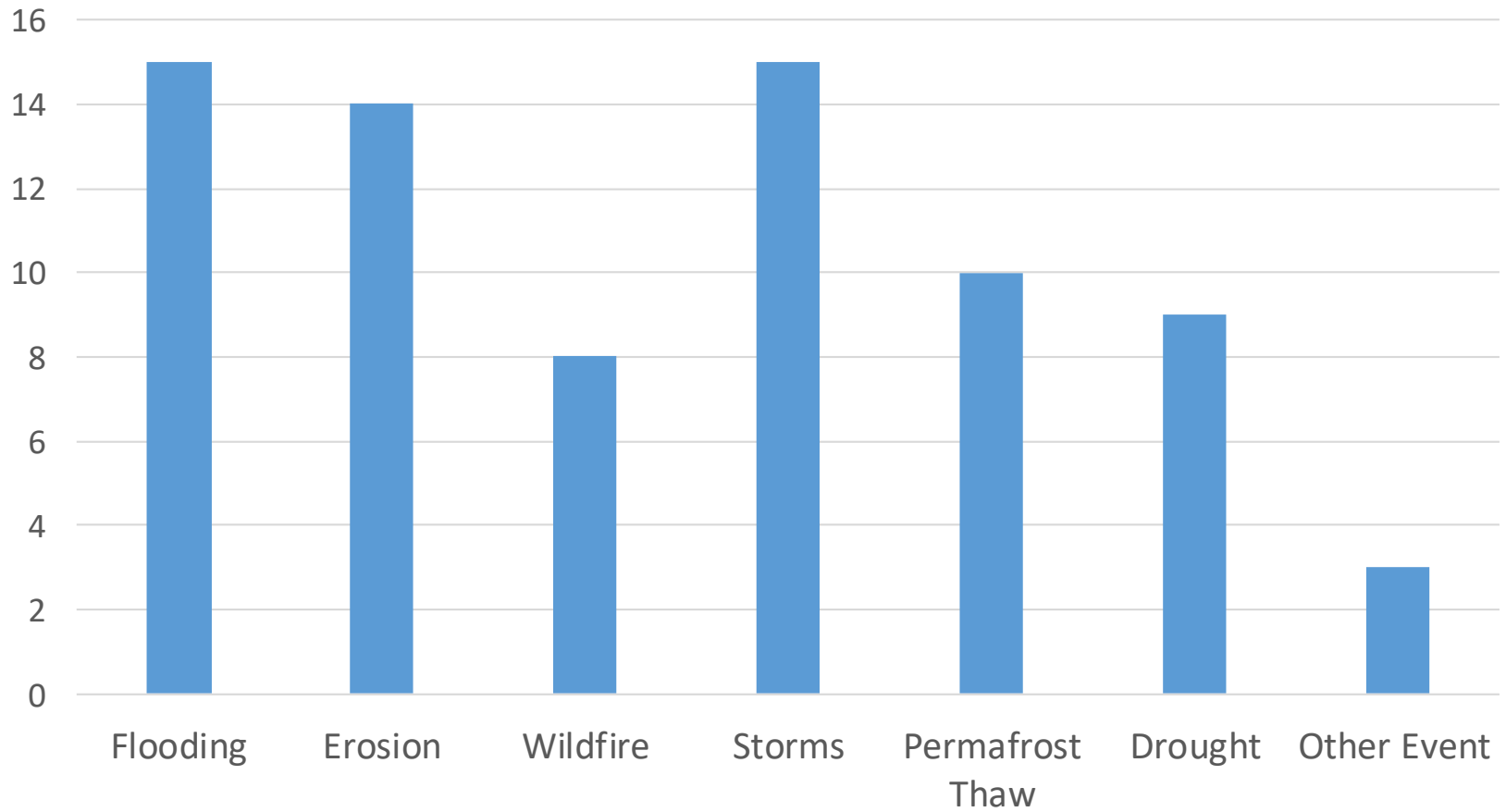


Photo Credit: Tanya  
Ballot - Selawik

Over the past year, has your community infrastructure been damaged or disrupted from events such as flooding, erosion, wildfire, windstorms, permafrost thaw, or drought?



# Causes of moderate damage to community infrastructure





What infrastructure was damaged by permafrost thaw?

- Roads and recreational trails
- Ice cellars
- Foundations for homes and utilities
- Airport buildings and runway
- Sewer lagoon and pipes
- Dumpsite