

LEO Network Meeting

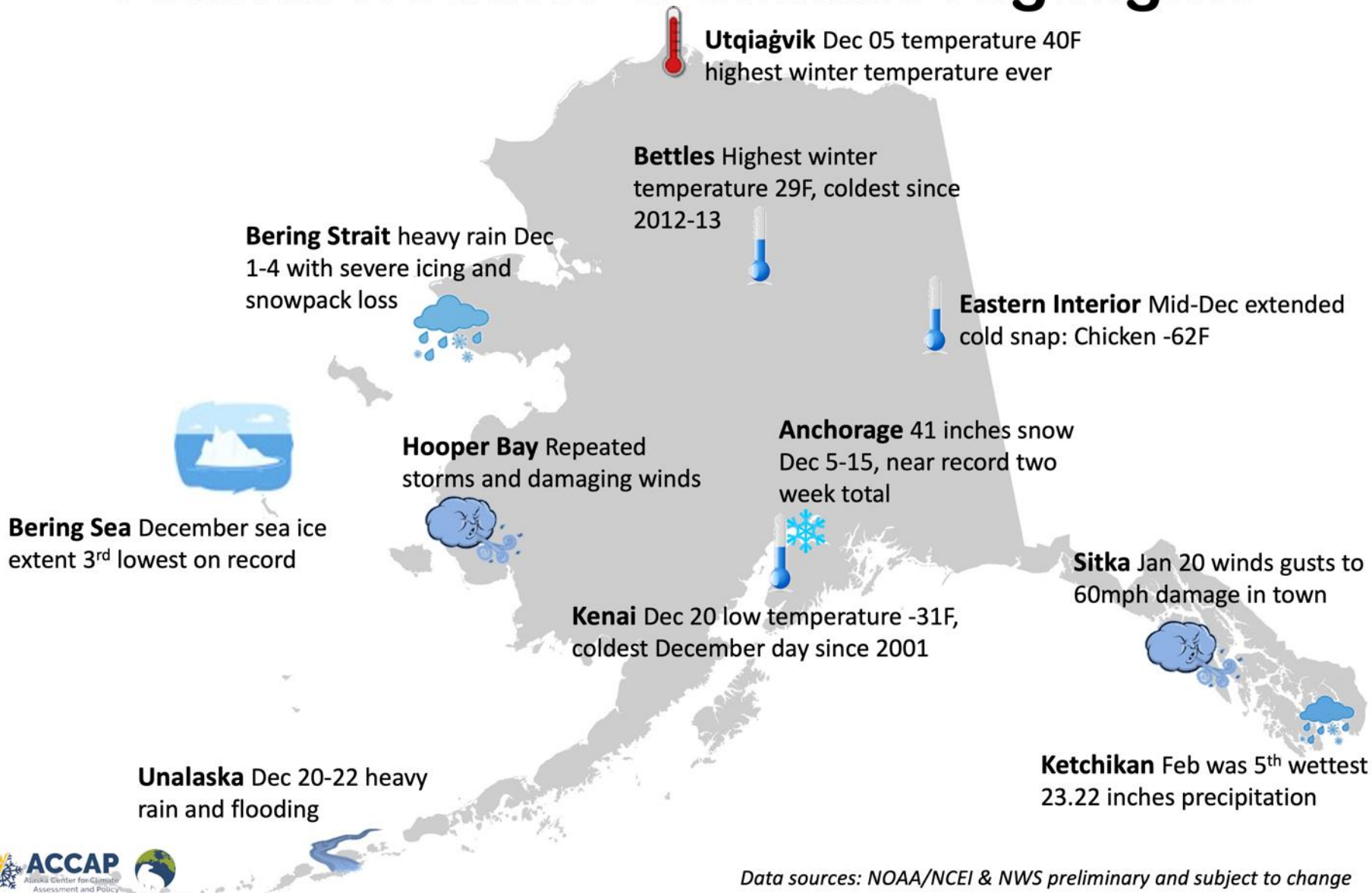
Winter 2022-23 Climate Review and Spring 2023 Outlook

Rick Thoman

Alaska Center for Climate Assessment and Policy
University of Alaska Fairbanks

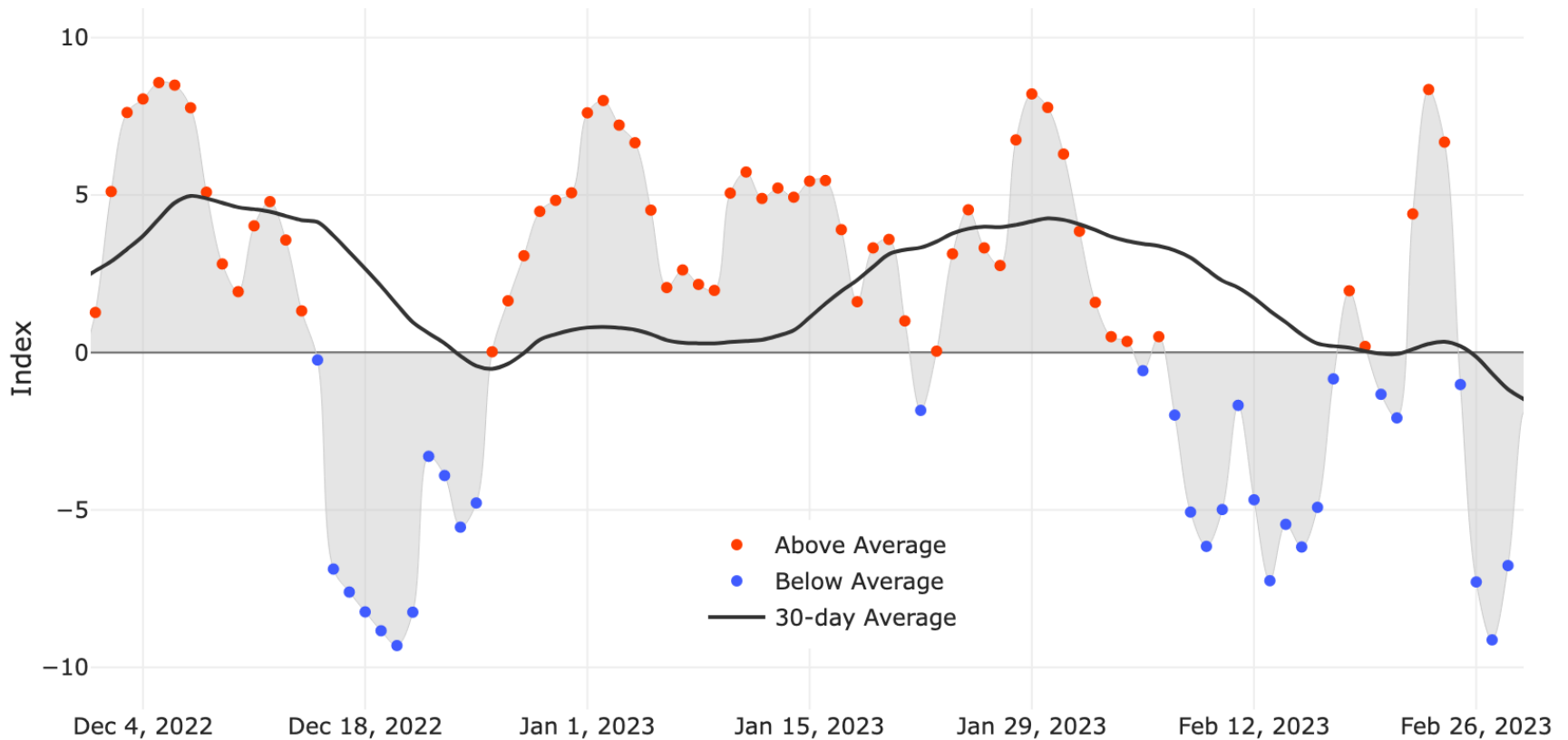
Winter 2022-23

Alaska Weather & Climate Highlights



Alaska Daily Temperature Index

Alaska Statewide Temperature Index
December 1, 2022 to February 28, 2023

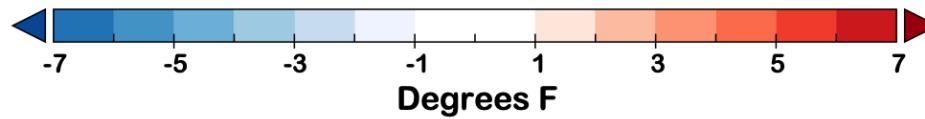
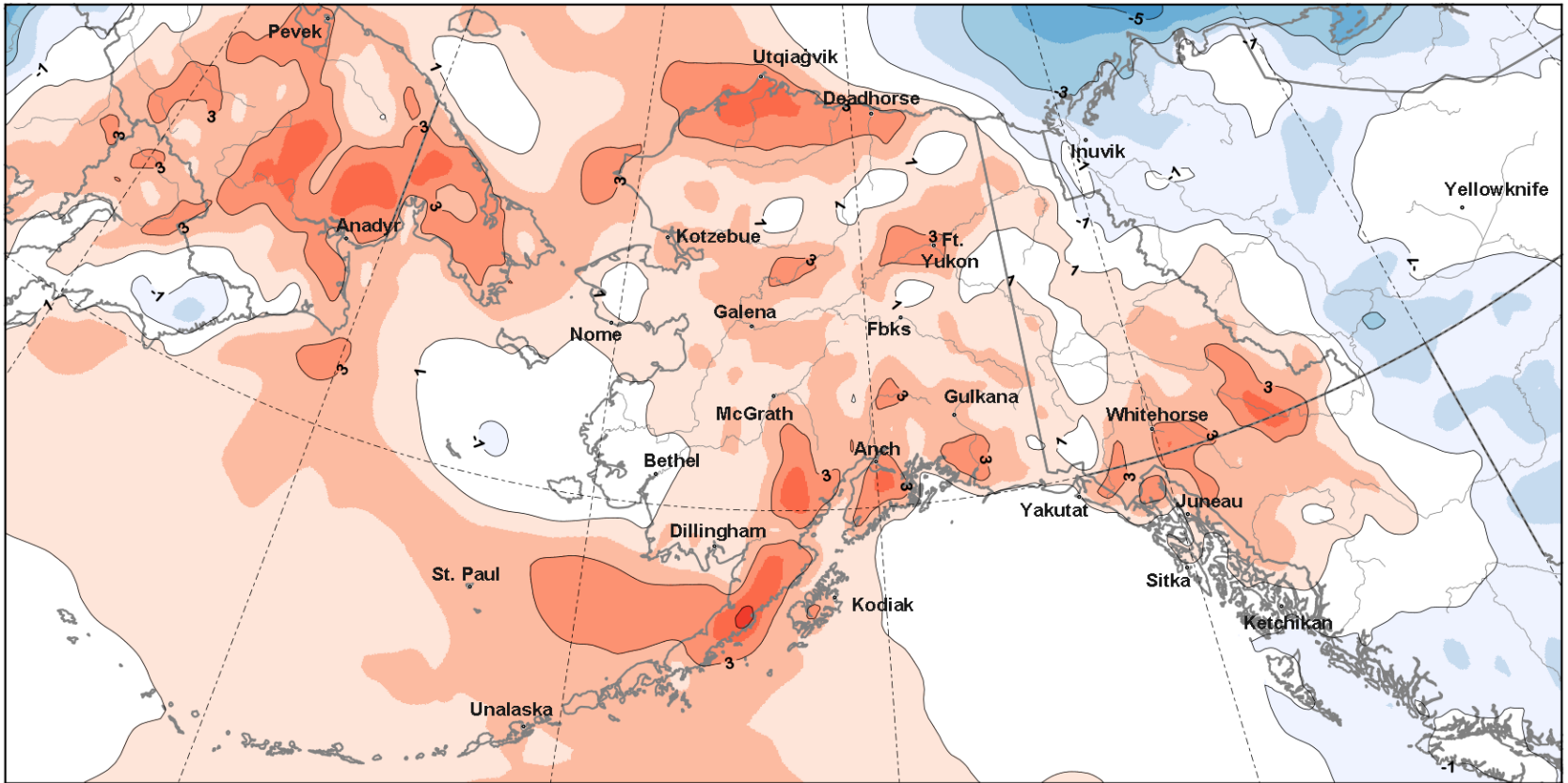


Online: <http://accap.uaf.edu/tools/statewide-temperature-index>



Winter Temperatures

Average Temperature: Departure from Normal
Winter (December through February) 2022-23

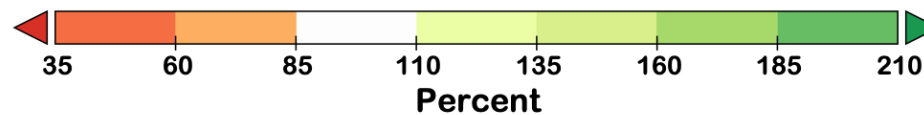
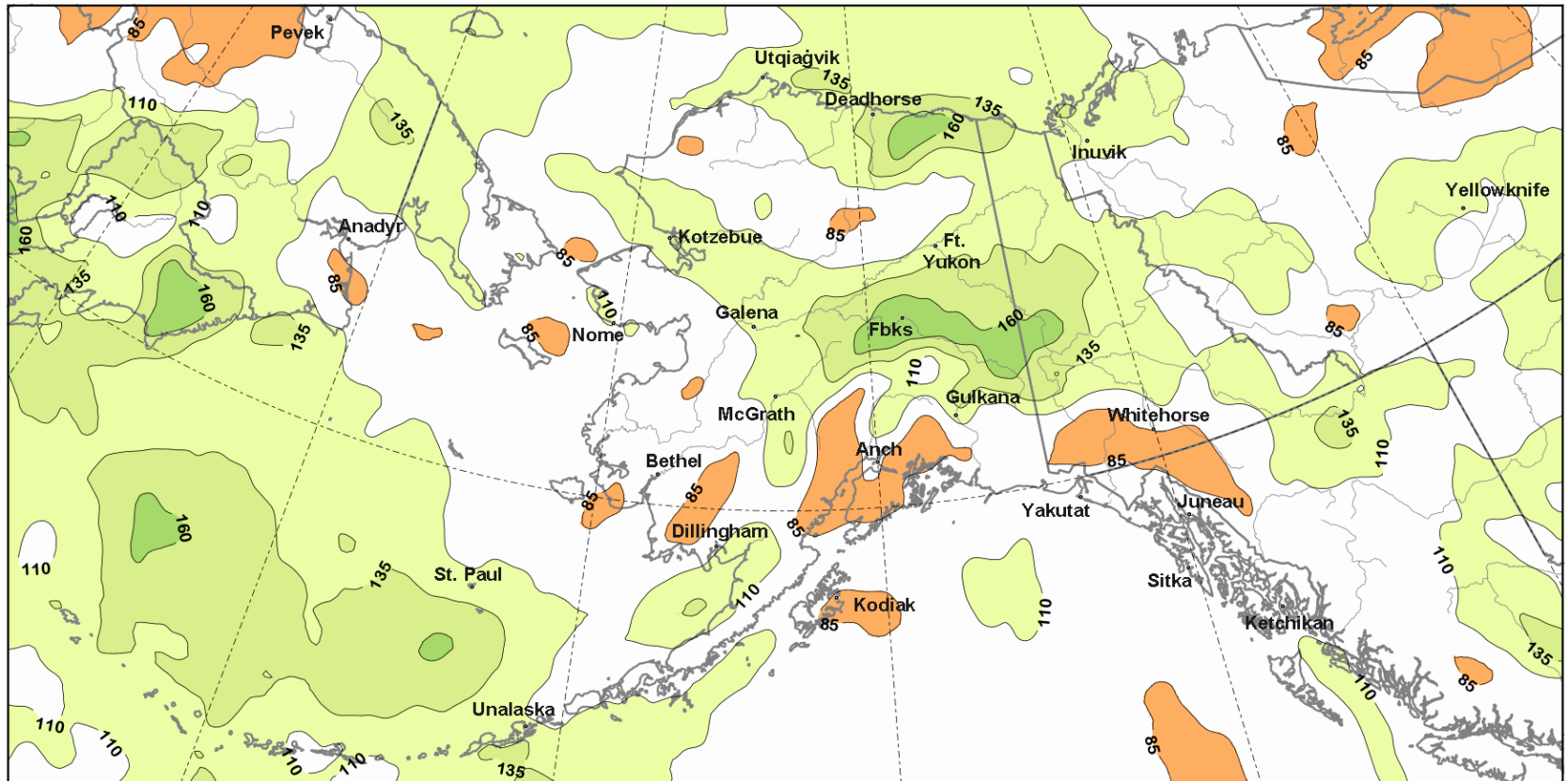


1991-2020 Baseline
ERA5 courtesy of ECMWF/Copernicus

Data: ERA5 courtesy of EMCWF/Copernicus
1991-2020 Baseline

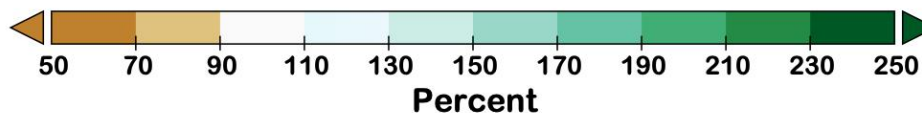
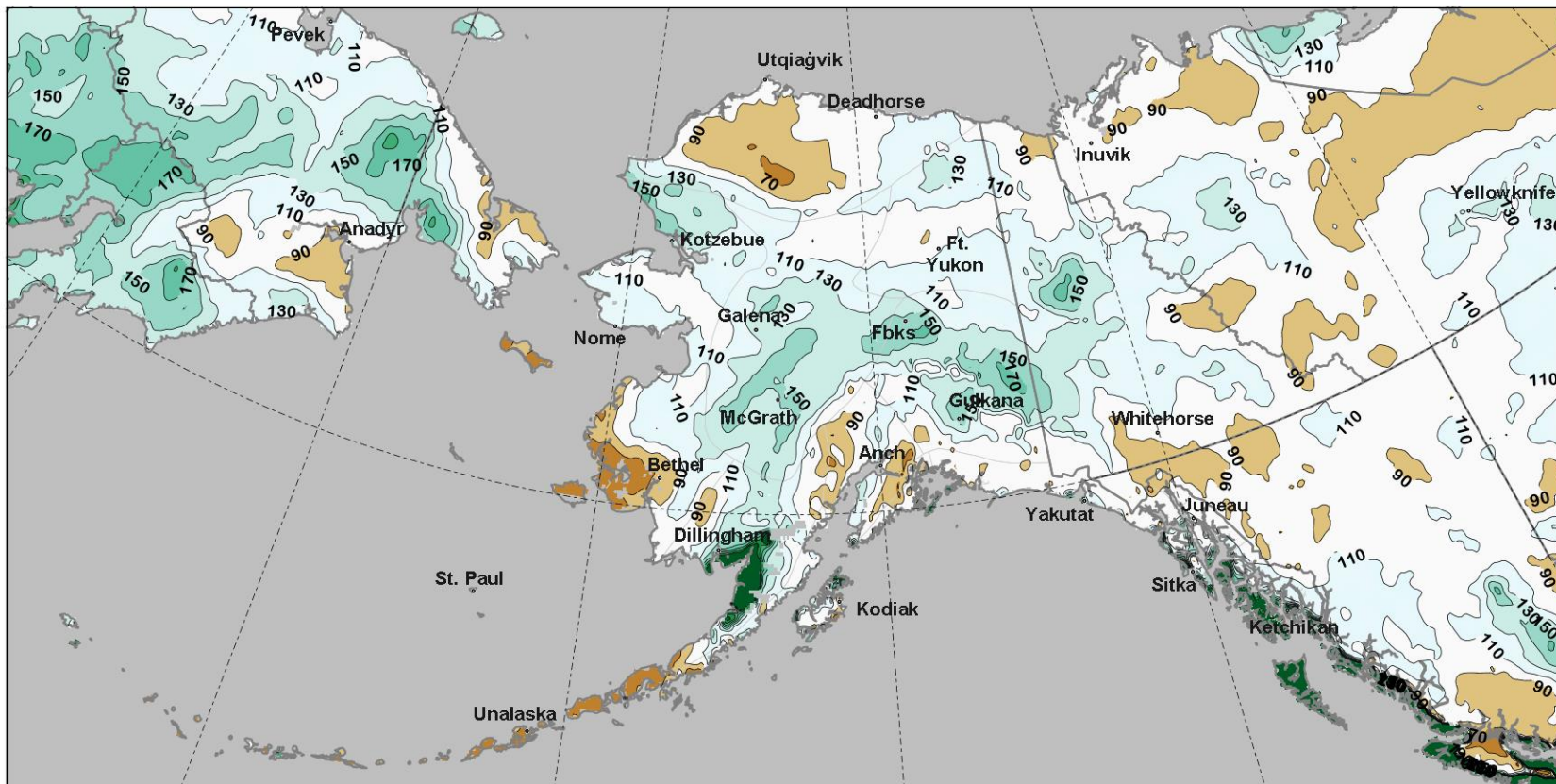
Winter Precipitation

Average Temperature: Departure from Normal
Winter (December through February) 2022-23

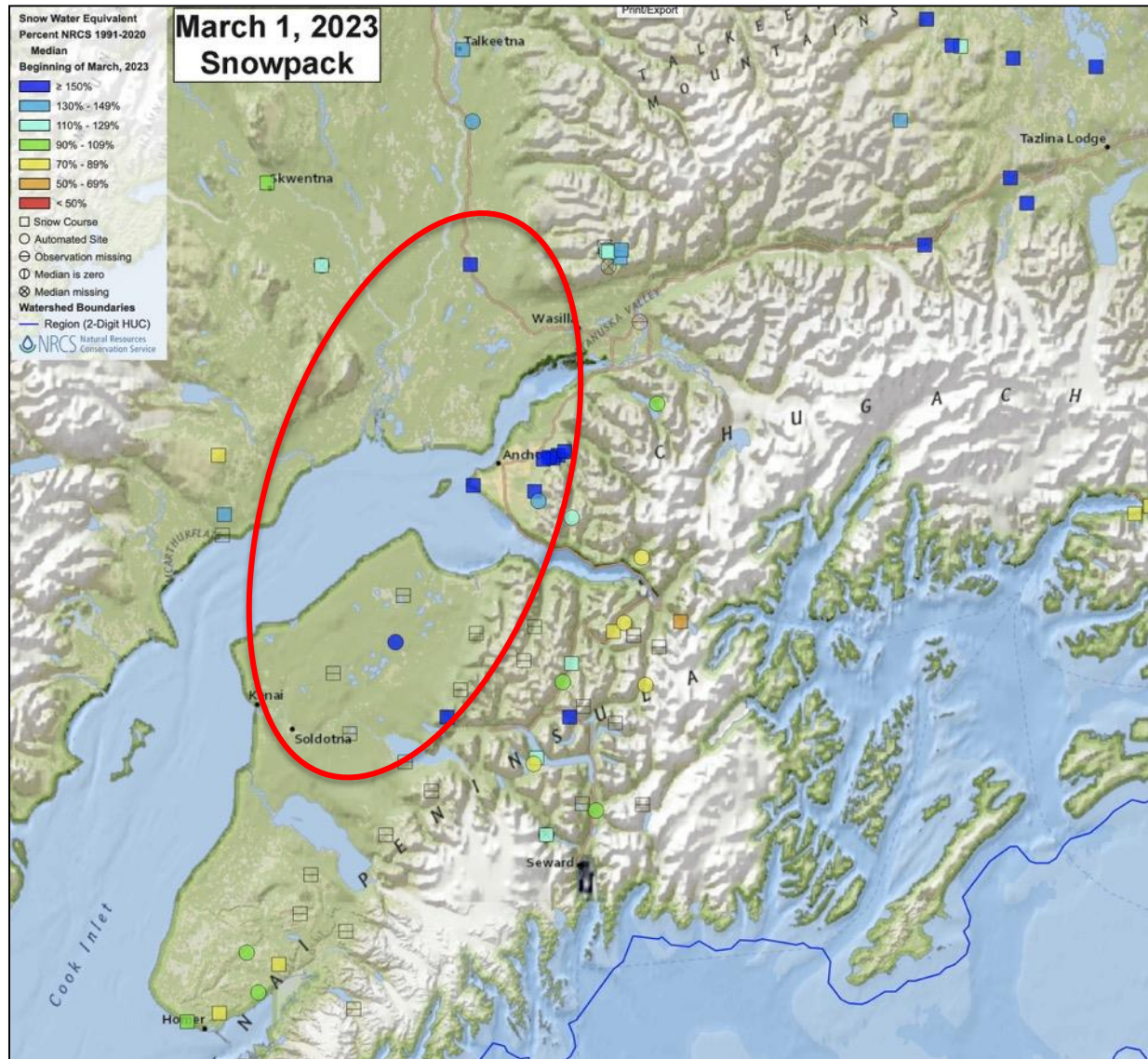


Snowpack is Variable

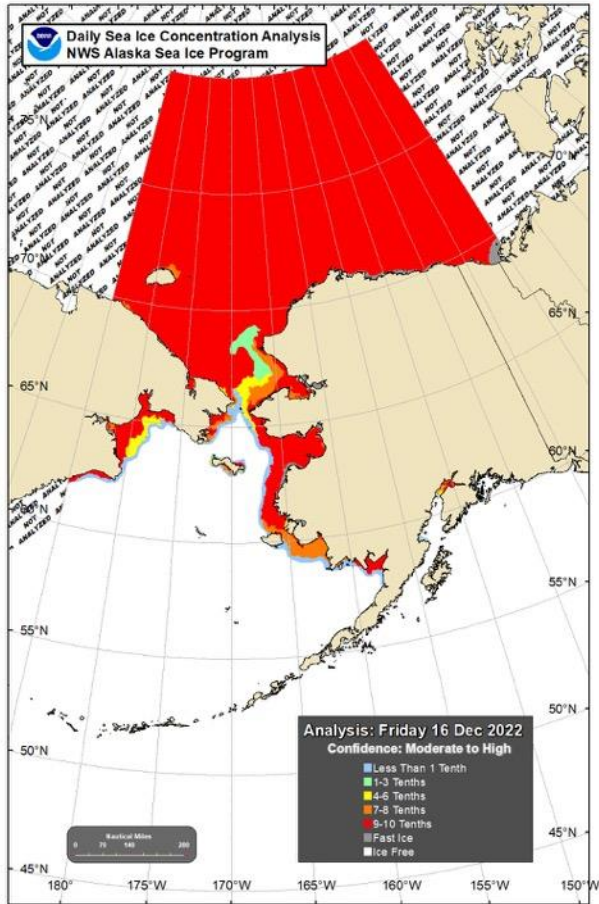
Snowpack Snow Water Equivalent: Percent of Median
March 01, 2023



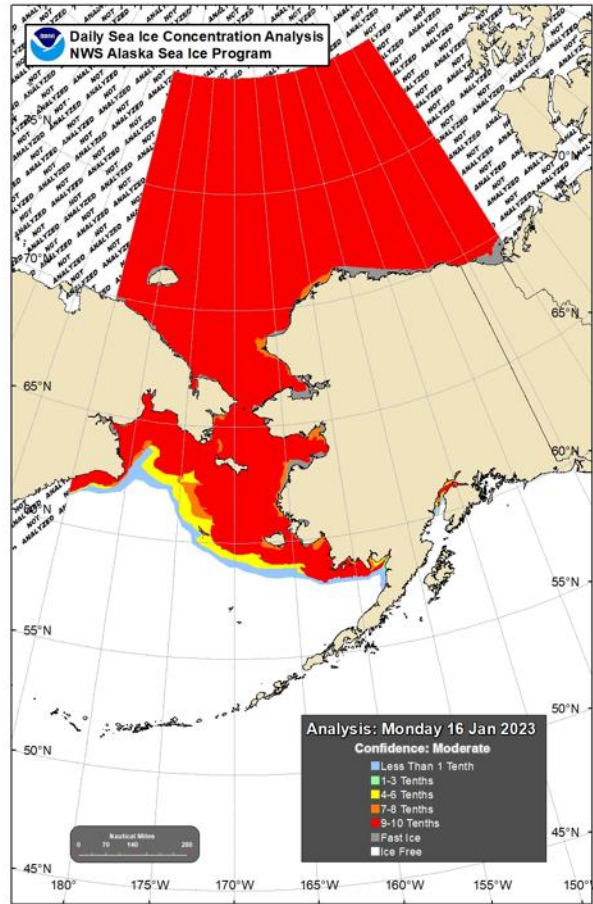
Southcentral Snowpack



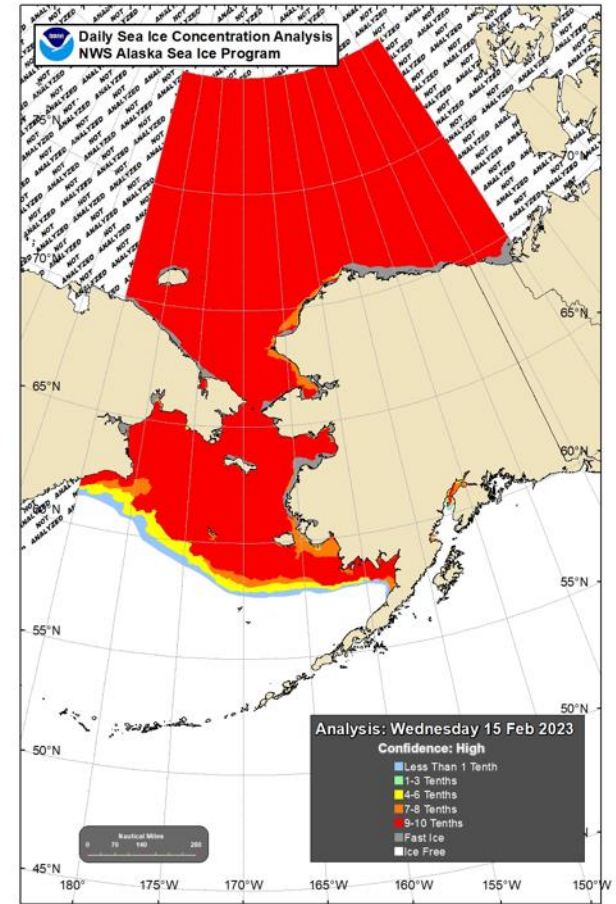
Sea Ice Winter 2022-23



Dec 16



Jan 16

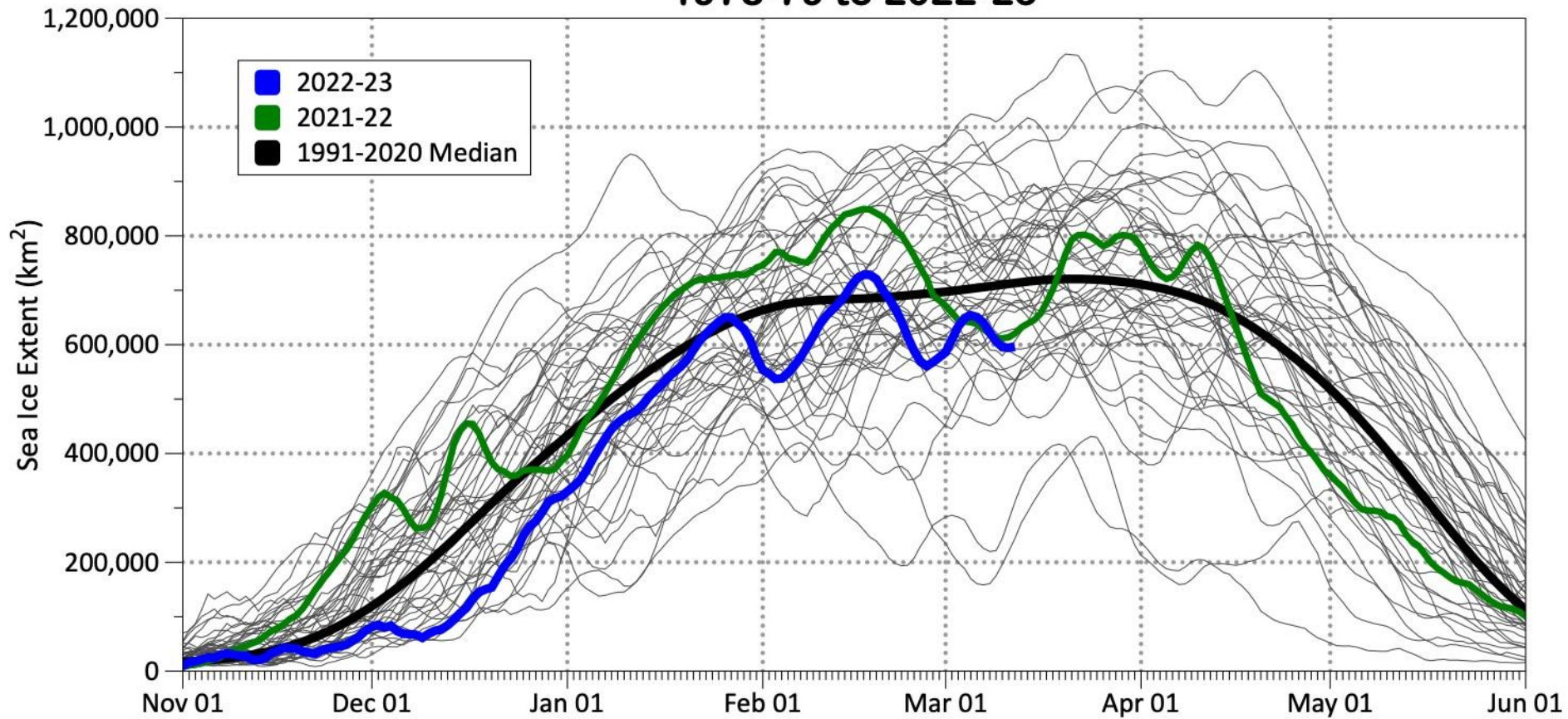


Feb 15



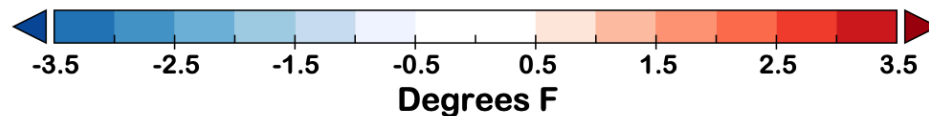
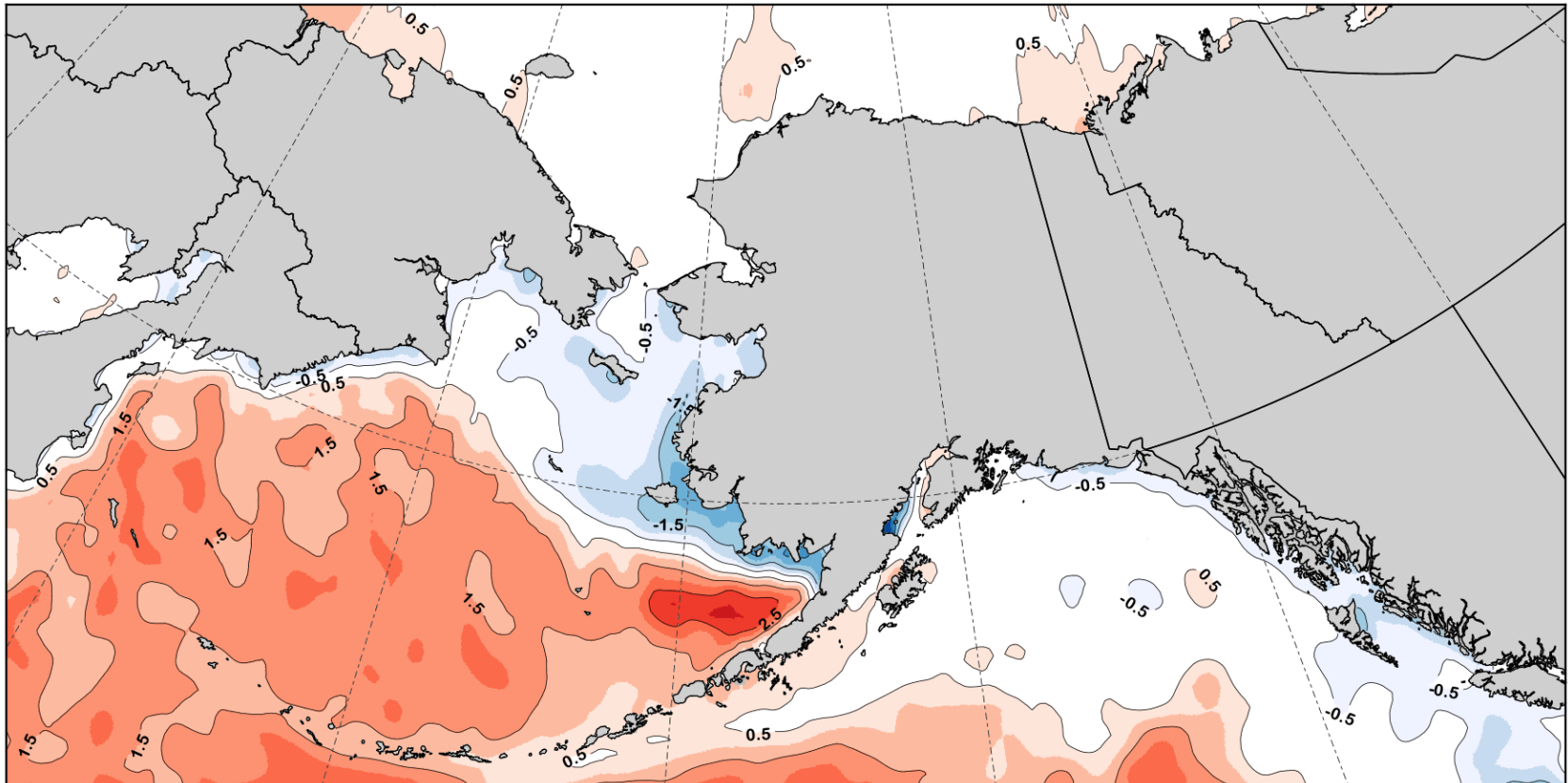
Bering Sea Ice Extent

Bering Sea Daily Ice Extent 1978-79 to 2022-23

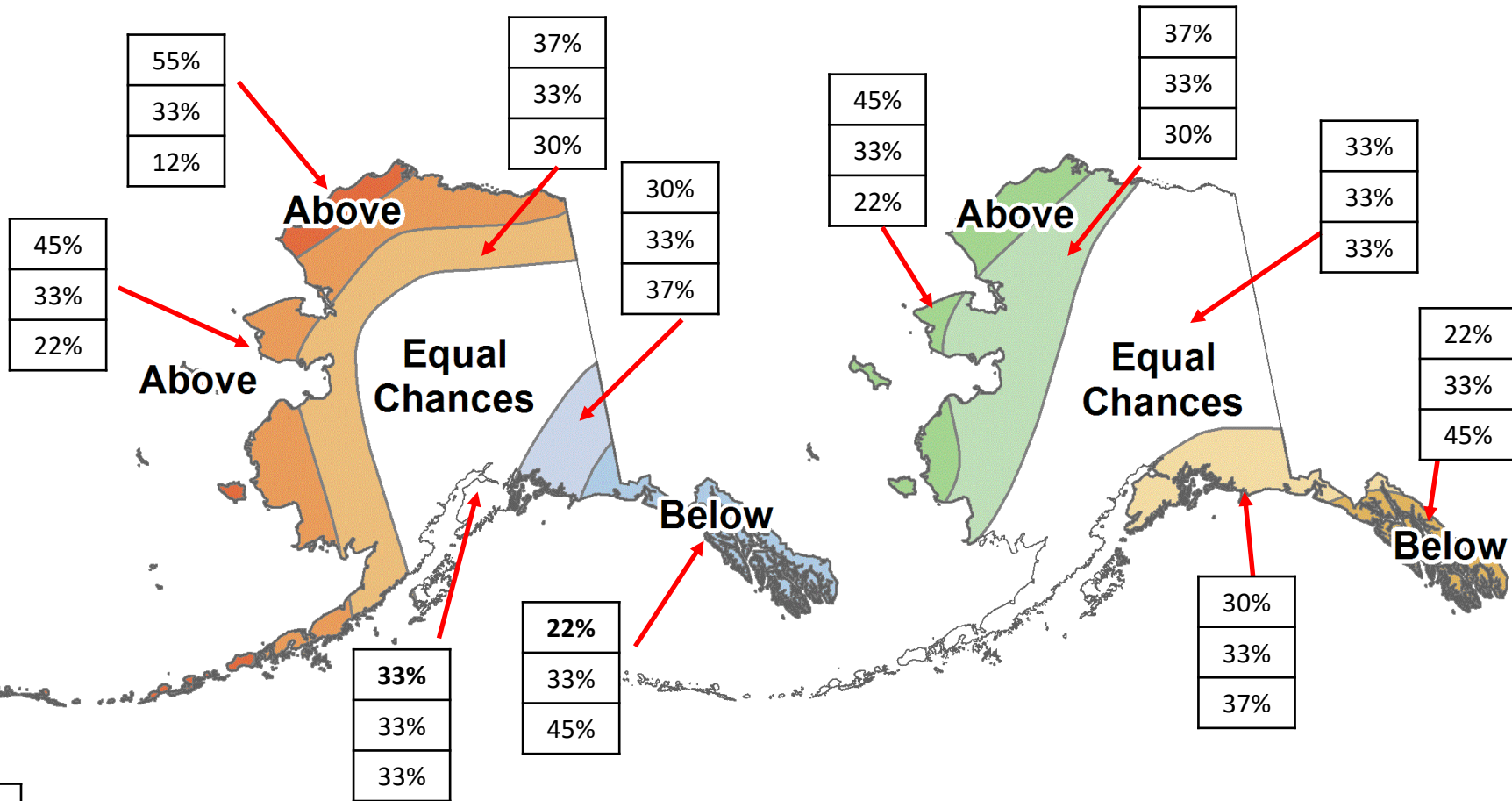


Winter 2022-23 Ocean Temperatures

Average Sea Surface Temperature Departure from Normal
Winter (December through February) 2022-23



CPC March-May 2023 Outlook



Average Temperature Outlook

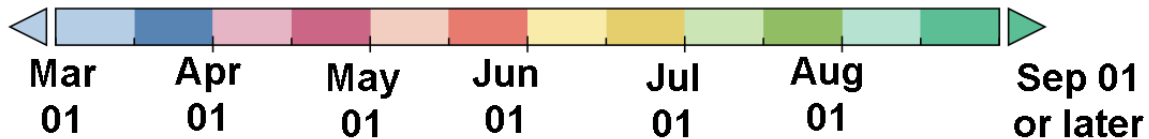
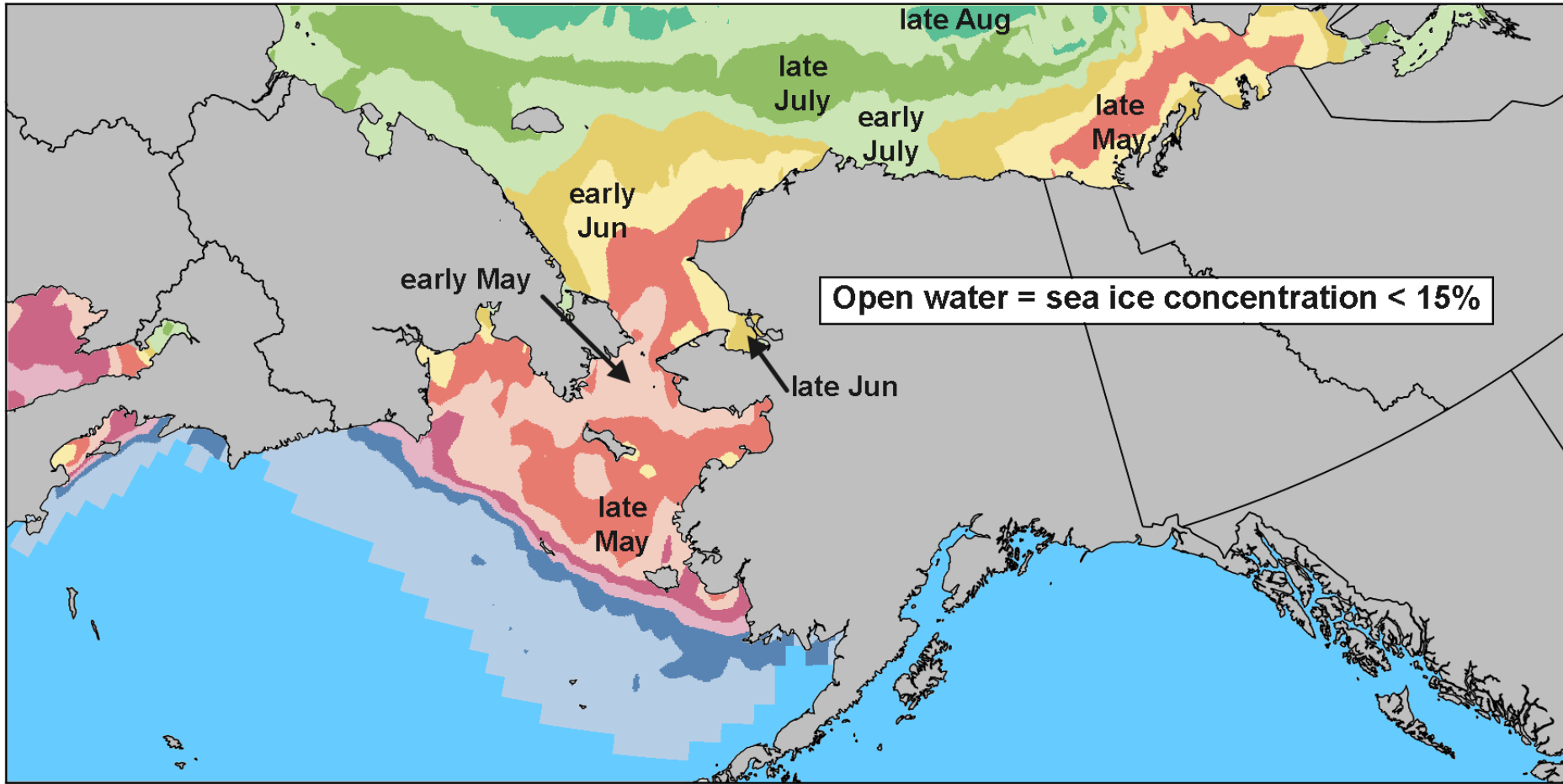
Total Precipitation Outlook

Above%
Normal%
Below%

Sea Ice Outlook

First Date with Open Water

Spring/Summer 2023



Thanks very much



Turnagain Arm
Photo by D. Moore, Feb 27, 2022

