

ALASKA: 2017 CLIMATE HIGHLIGHTS REVIEW 2017-18 WINTER SO FAR

Rick Thoman

Climate Science and Services Manager

NWS Alaska Region



2017 Alaska

Weather & Climate Highlights

Community Temperature Extremes

Warmest: 93F Skagway on August 05

Coldest: -59F Tanana on January 19

Barrow flooding late
Sept, warmest Oct-
Dec, avg temp 15.6F

Kotzebue
warmest Dec, avg
temp 18.0F

Bettles warmest any
month, July avg temp
64.4F

Upper Yukon: 410,000
acres burned, most since
2009

Nome June 4-10
avg temp 61.8F,
warmest week so
early in the summer

Fairbanks Oct 9-10
record 1.54" rain/snow

Kusko River
Delayed barges
from very low water
level into mid-
summer

McGrath warmest
Dec, avg temp: +19.3F

Juneau Oct 27
record flooding on
Jordan Creek

St. Paul Warmest
Nov since 1926, avg
temp 39.4F

Anchorage "The Dome"
collapsed Jan 21 from
heavy snow

Annette warmest April
of record, avg temp
48.7F

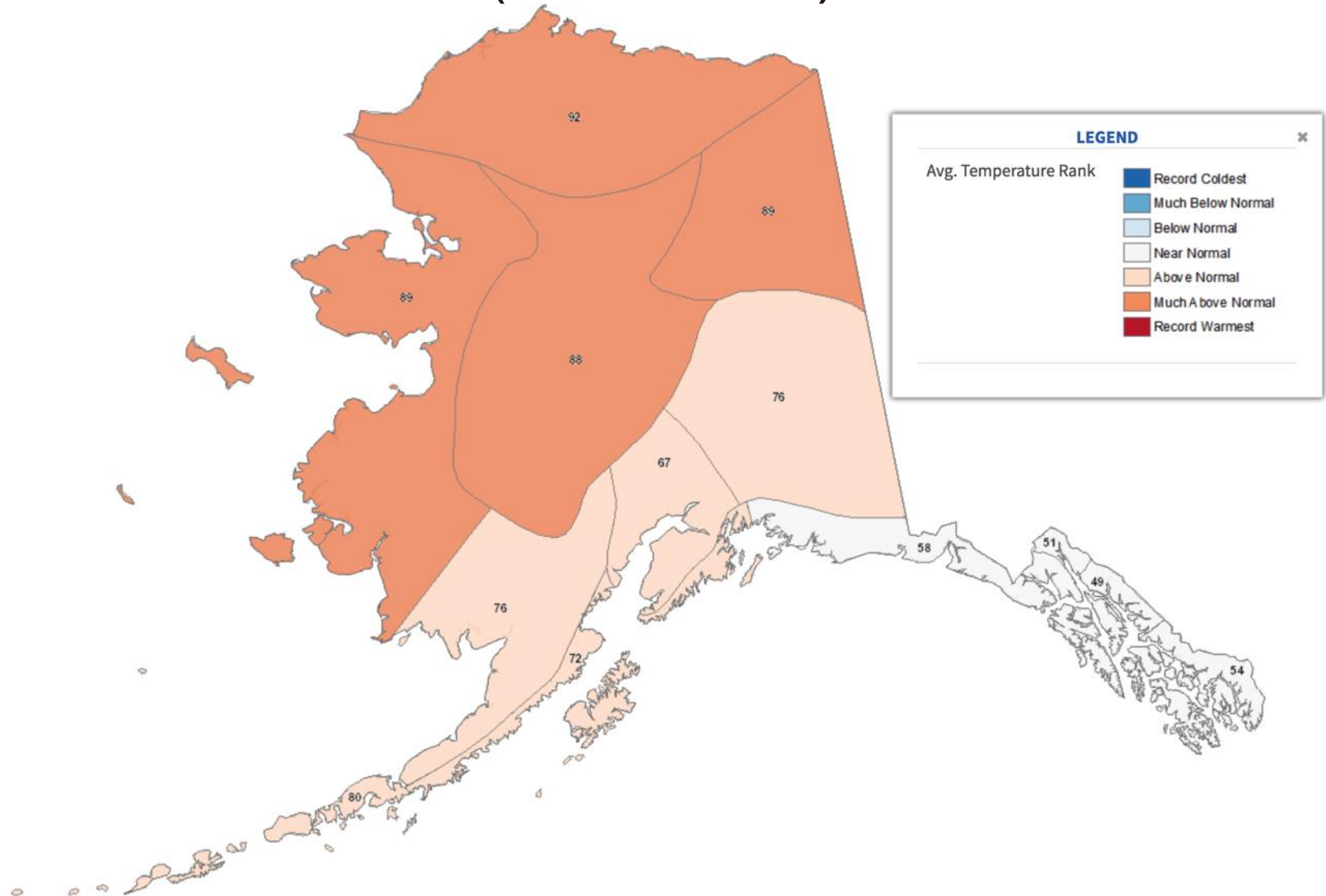
Cold Bay -6F on Feb 20
was lowest Feb temp in
70 years

Kodiak Jan-Mar
31% normal precip

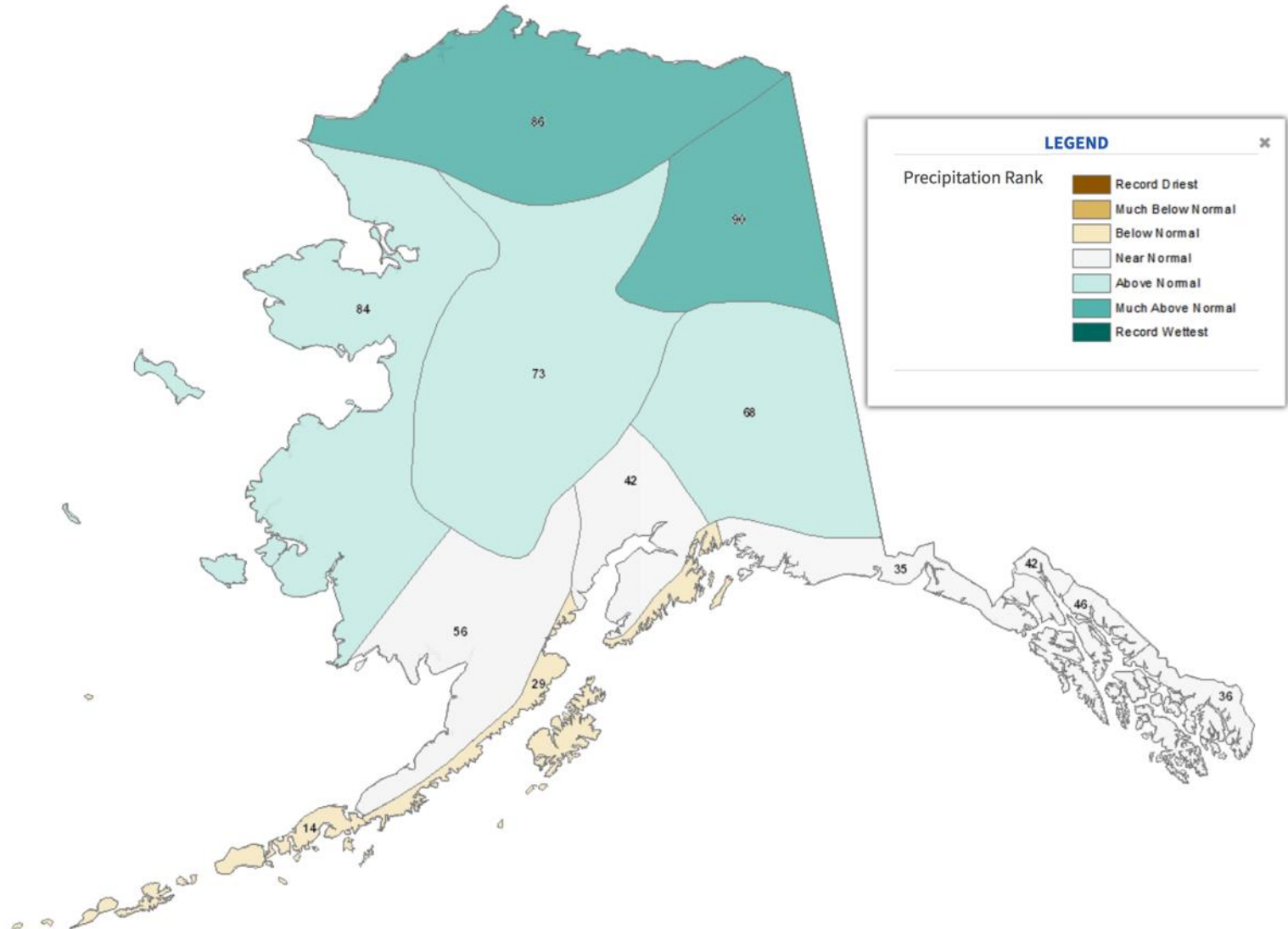
Data sources: NWS, NCEI and AICC, preliminary and subject to change



2017: Yearly Temperature Ranking (since 1925)

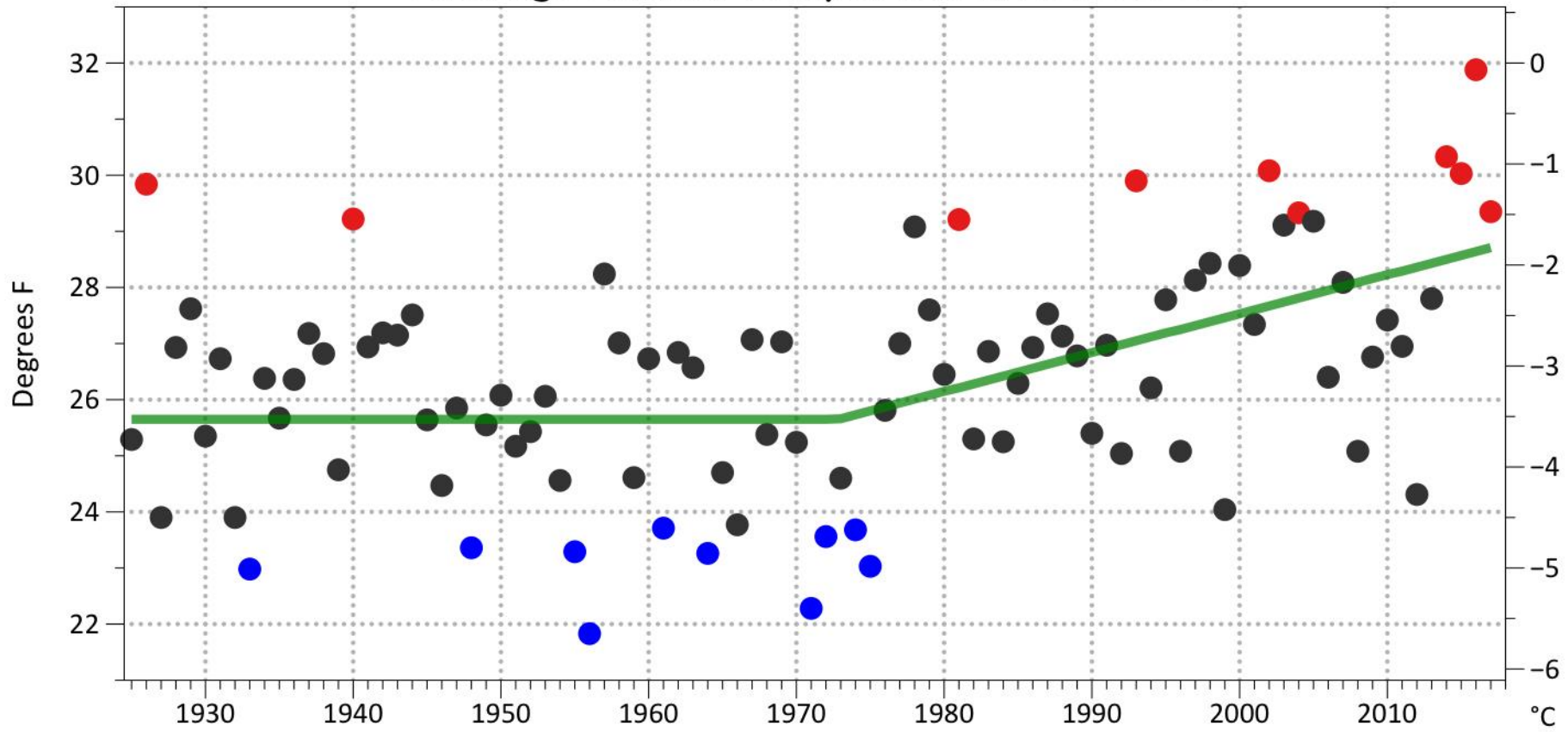


2017: Yearly Precipitation Ranking (since 1925)



Alaska Average Yearly Temperature

Alaska Statewide Average Annual Temperature, 1925-2017



- Ten Warmest
- Ten Coldest
- Best Fit

Data source: NOAA/NCEI

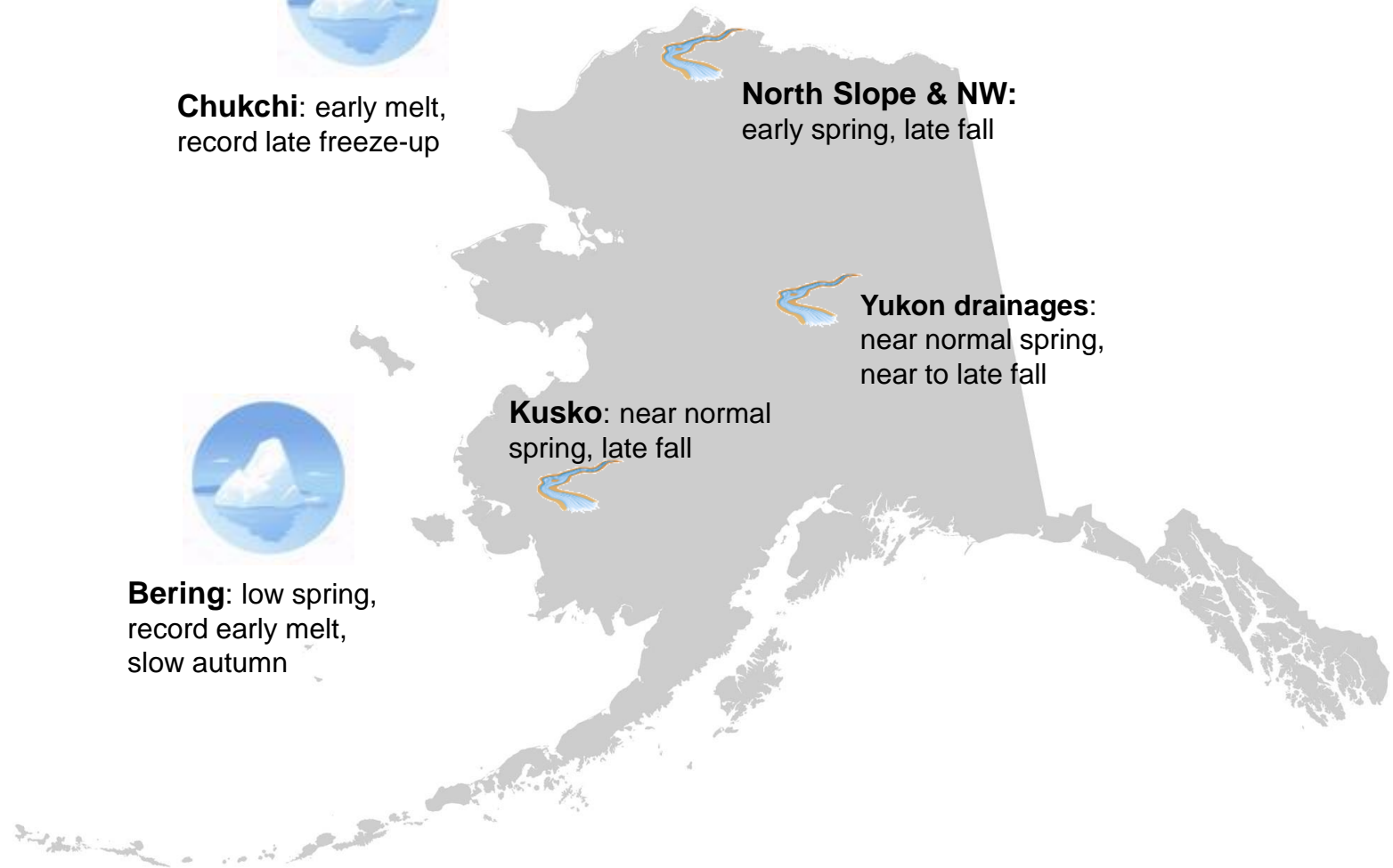
River and Sea Ice in 2017



Chukchi: early melt,
record late freeze-up

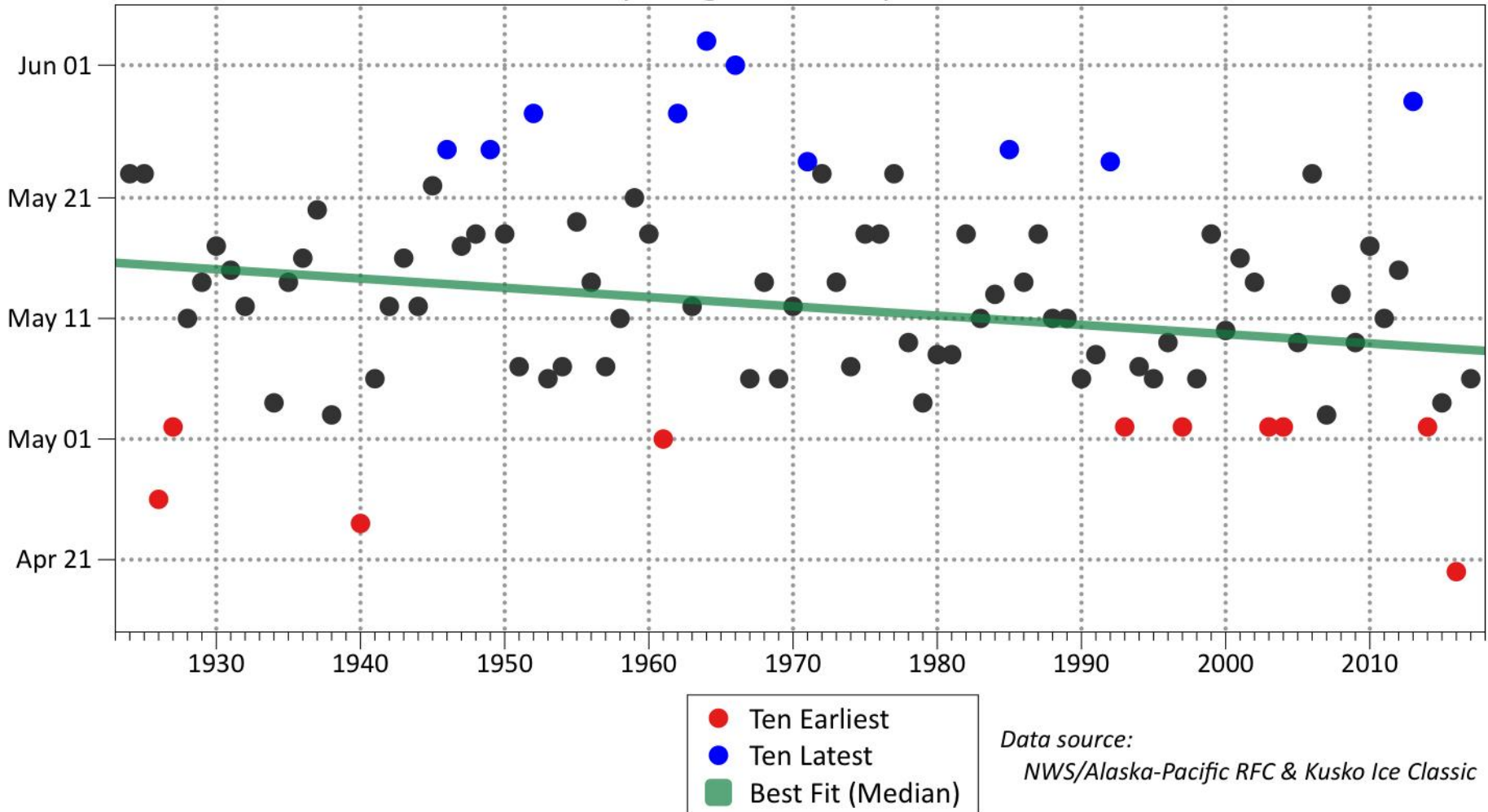


Bering: low spring,
record early melt,
slow autumn



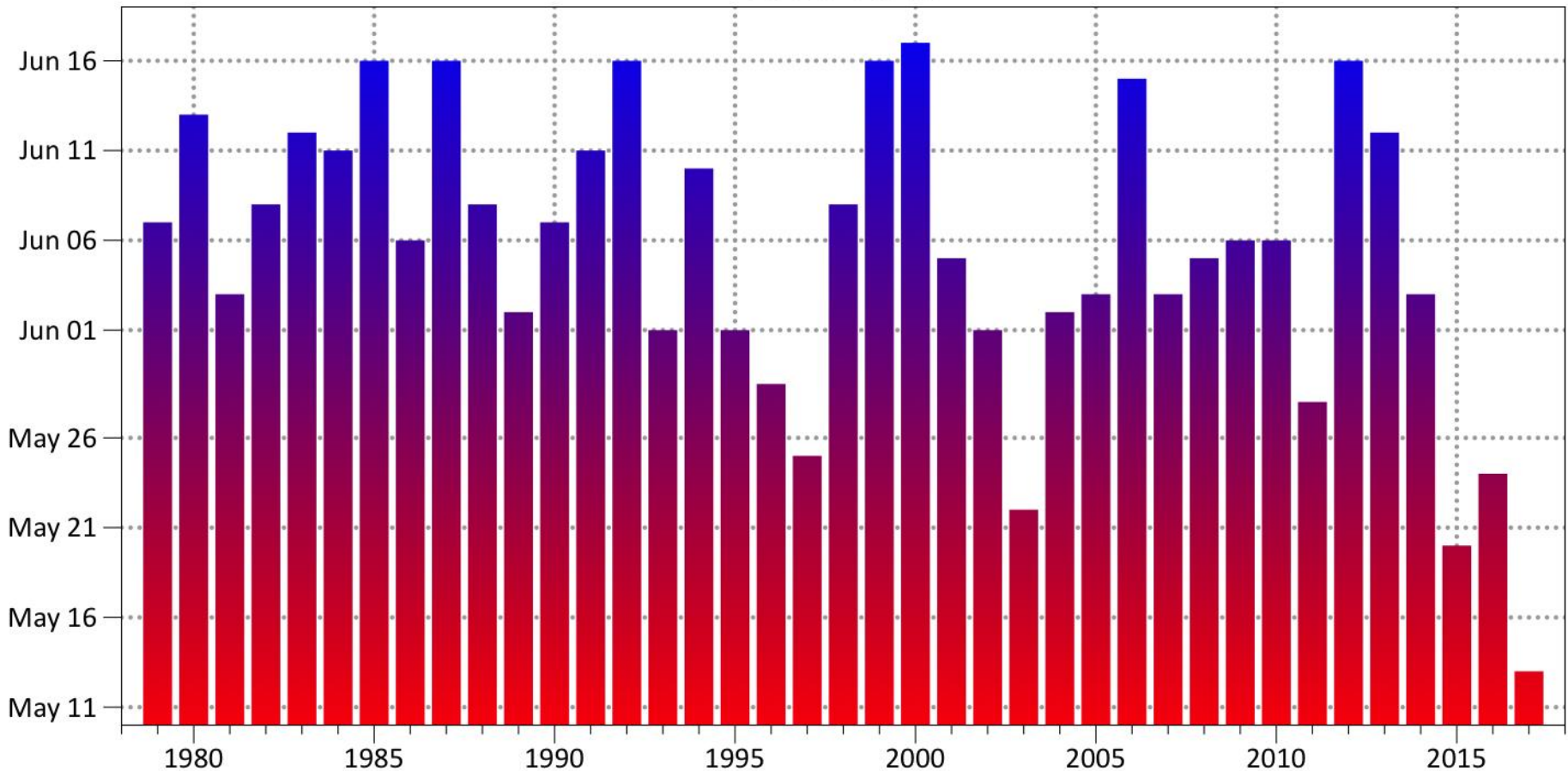
Kuskokwim at Bethel Spring Break-up

Kuskokwim River at Bethel Spring Break-up Date



Bering Sea Spring Ice Melt

Bering Sea Ice Spring Meltout 1979-2017



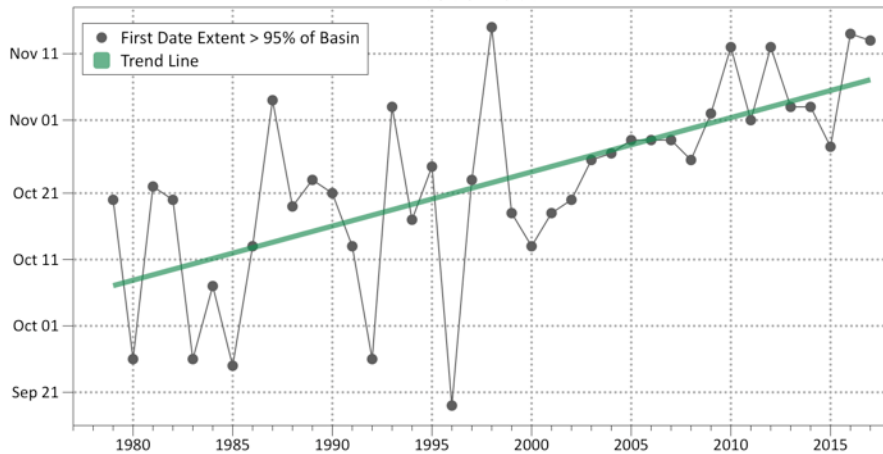
First Date when extent < 10% of 1979-2017 mean max (83,000 km²)

Data source: NSIDC Regional Sea Ice Index v3



Autumn 2017: Late Ocean Freeze-up

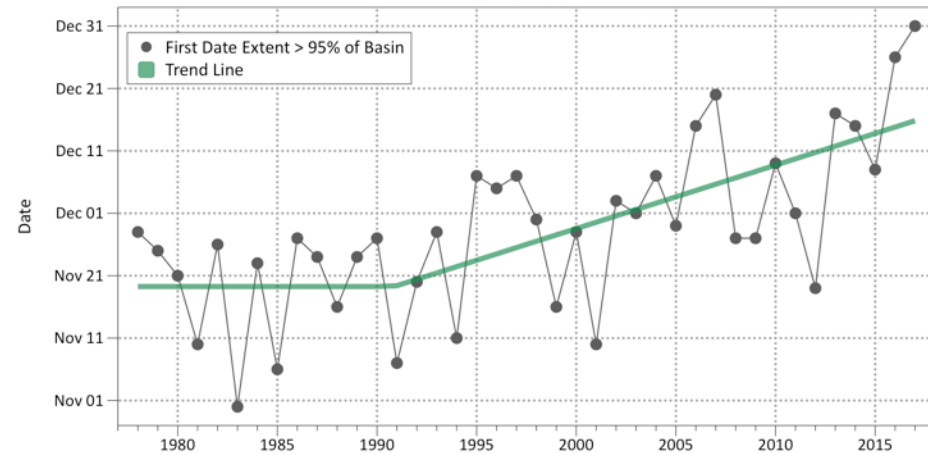
Beaufort Sea Ice-Over Date 1979-2017



© 2017 Rick Thoman

Data source: NSIDC Regional Sea Ice Index v3

Chukchi Sea Autumn Ice-Over Date 1978-2017

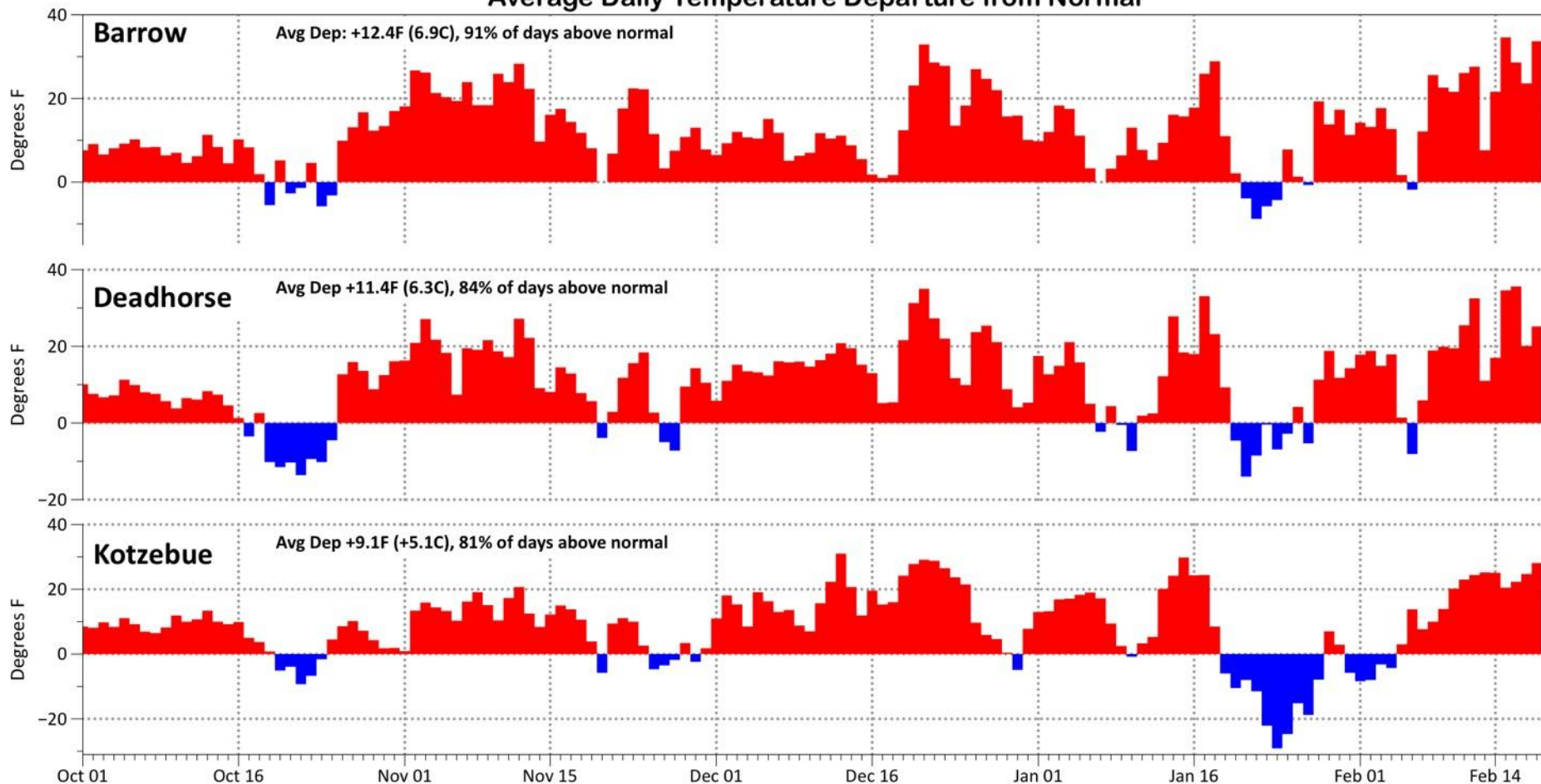


Data source: NSIDC Regional Sea Ice Index v3



Persistent Warmth

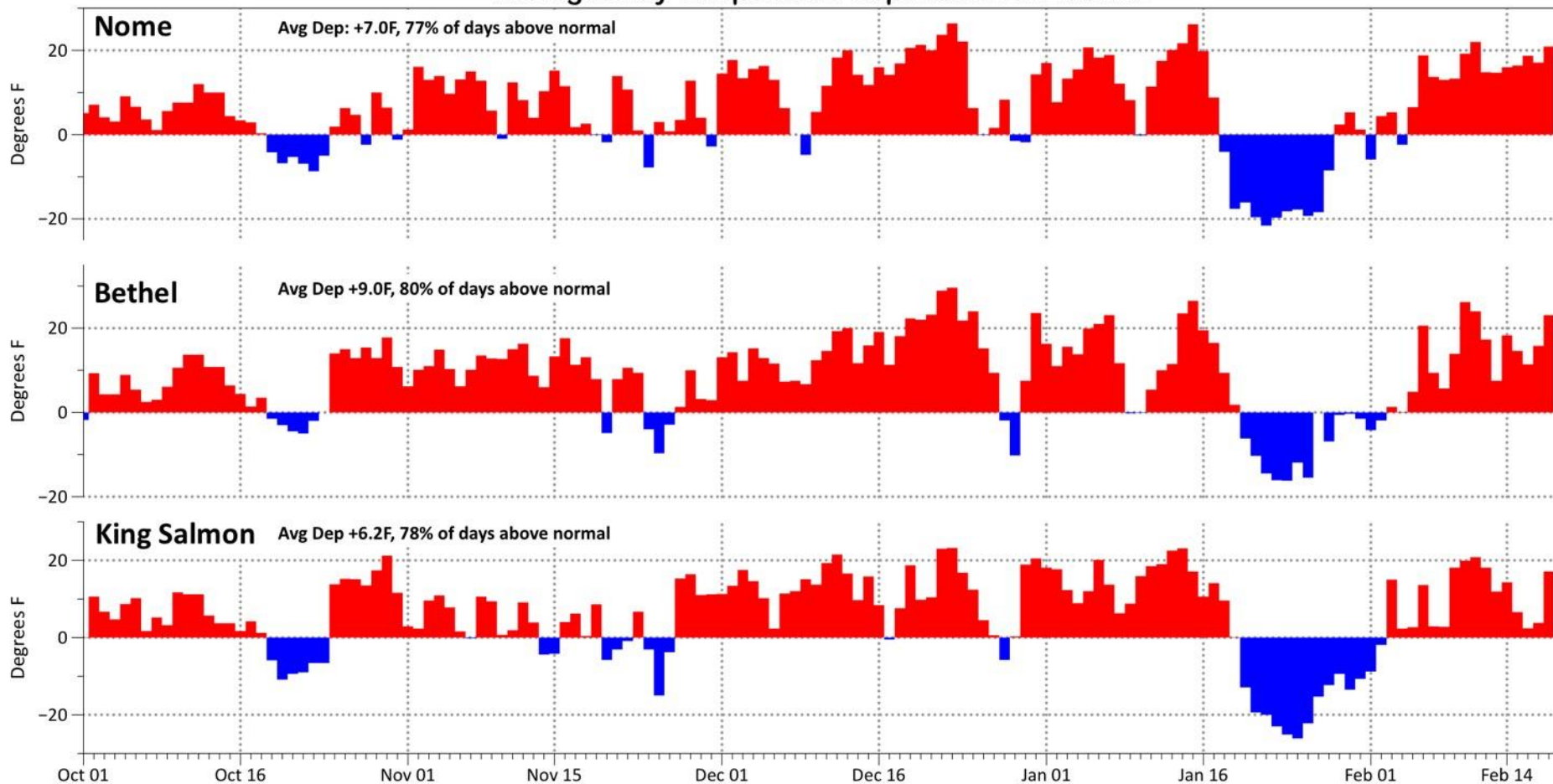
Arctic Alaska 2017-18
Average Daily Temperature Departure from Normal



Data source: NOAA/NCEI & NWS
Reference base period: 1981-2010
Updated through Feb 18, 2018

Persistent Warmth

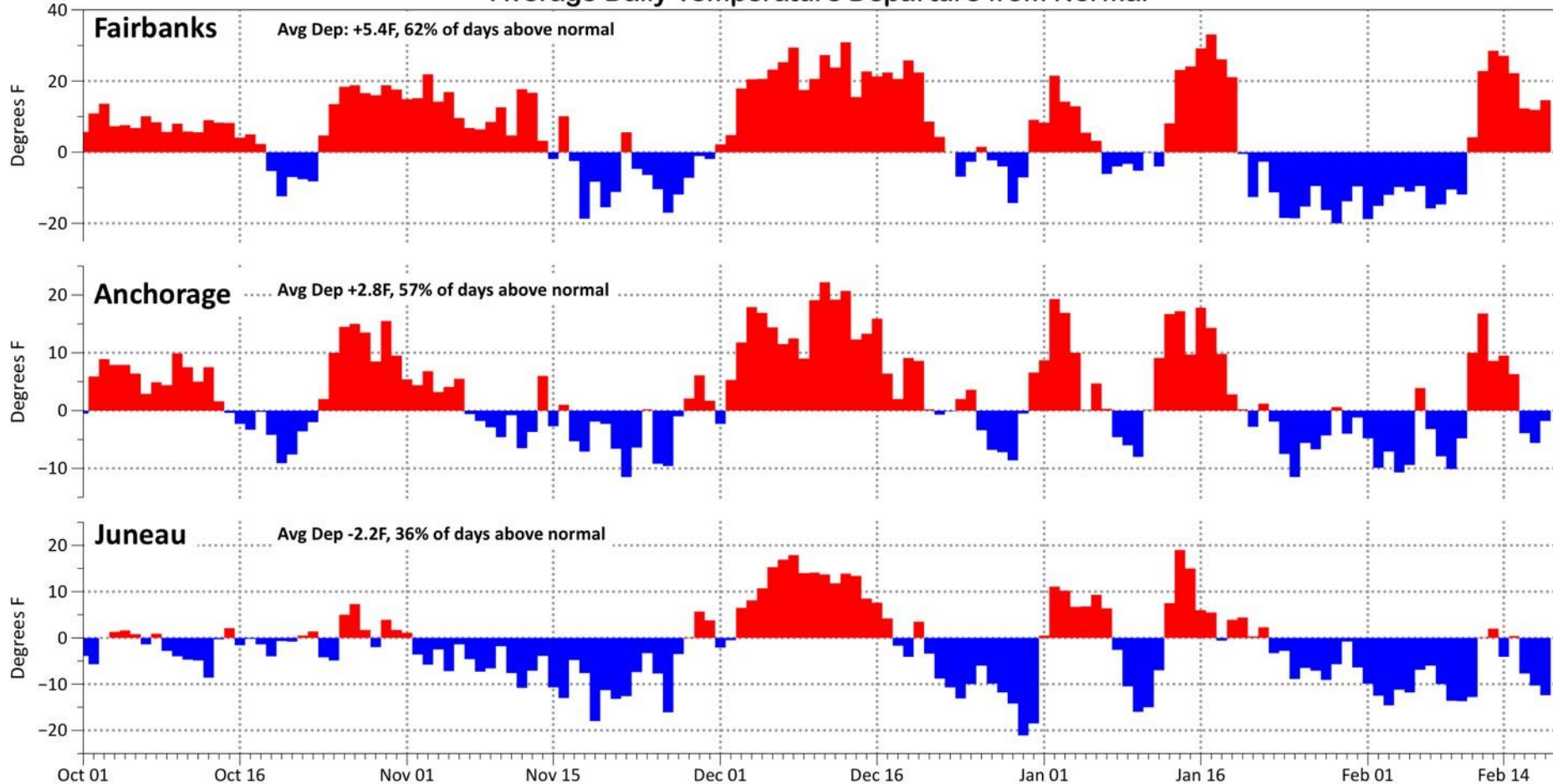
Western Alaska 2017-18
Average Daily Temperature Departure from Normal



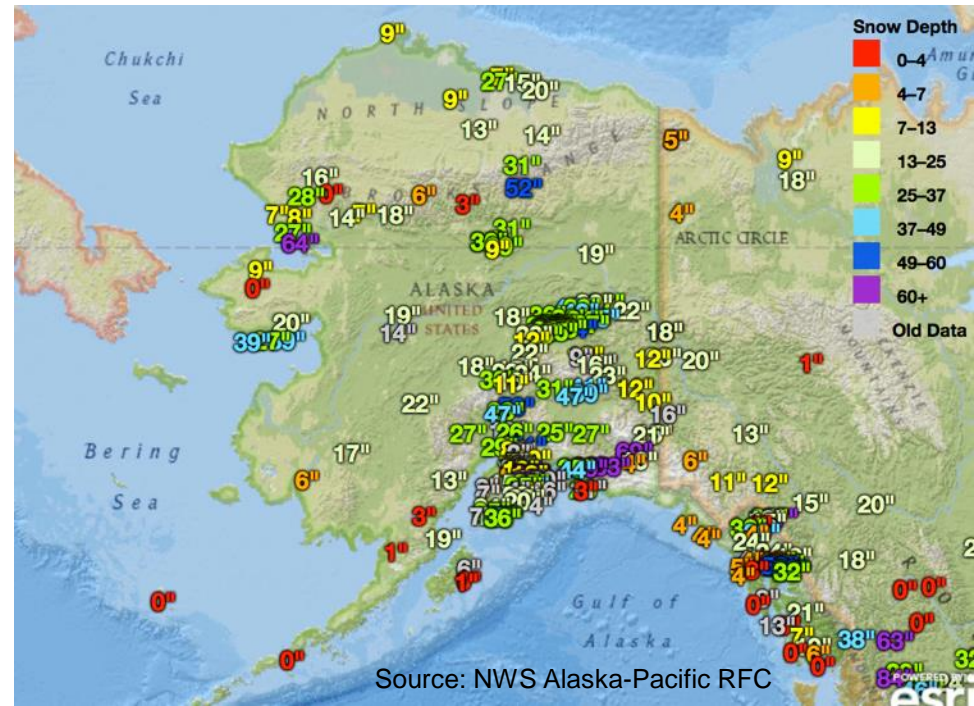
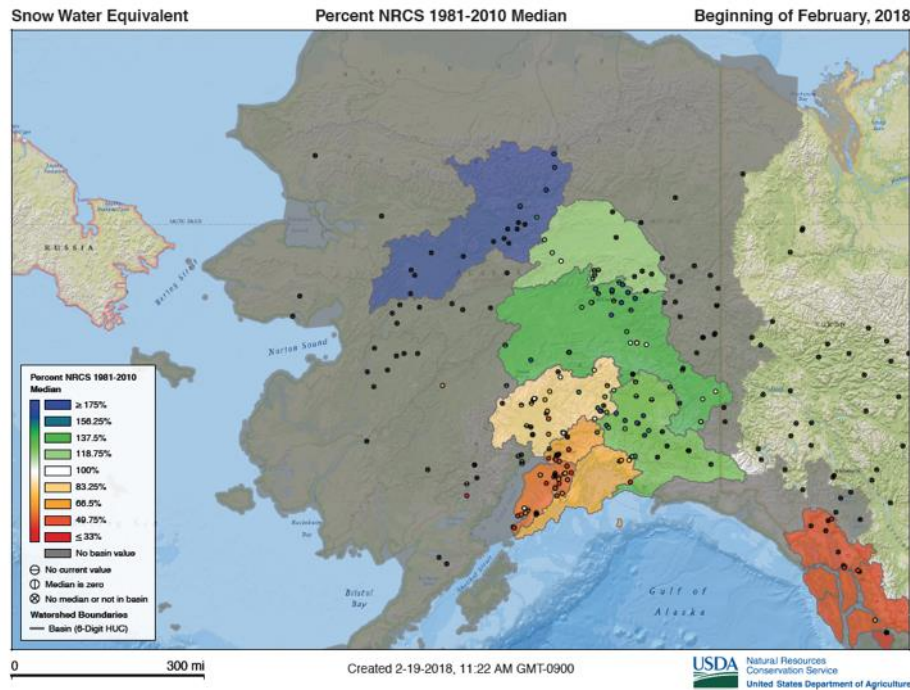
Data source: NOAA/NCEI & NWS
Reference base period: 1981-2010
Updated through Feb 18, 2018

Less Persistent Warmth

Western Alaska 2017-18
Average Daily Temperature Departure from Normal

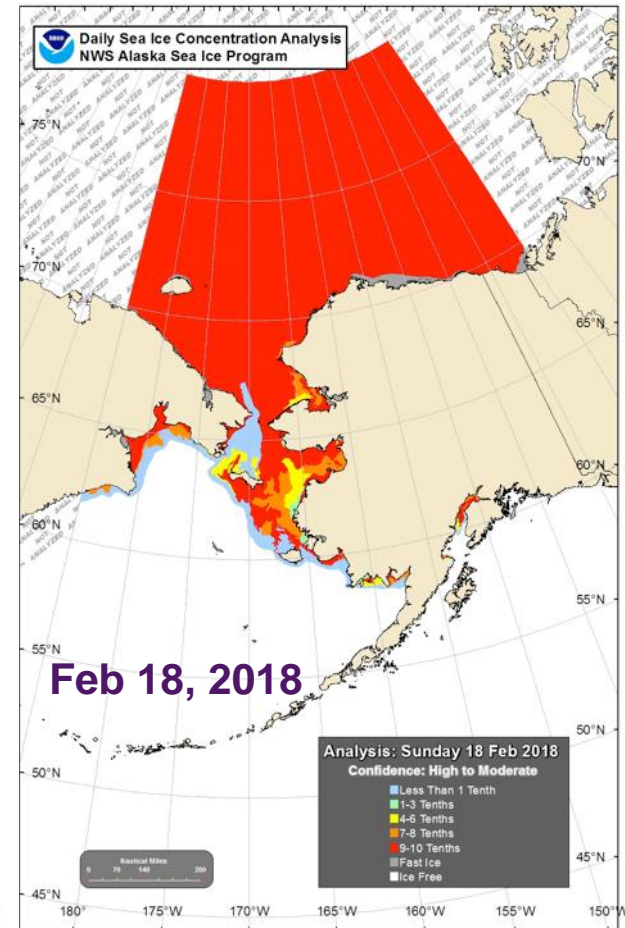
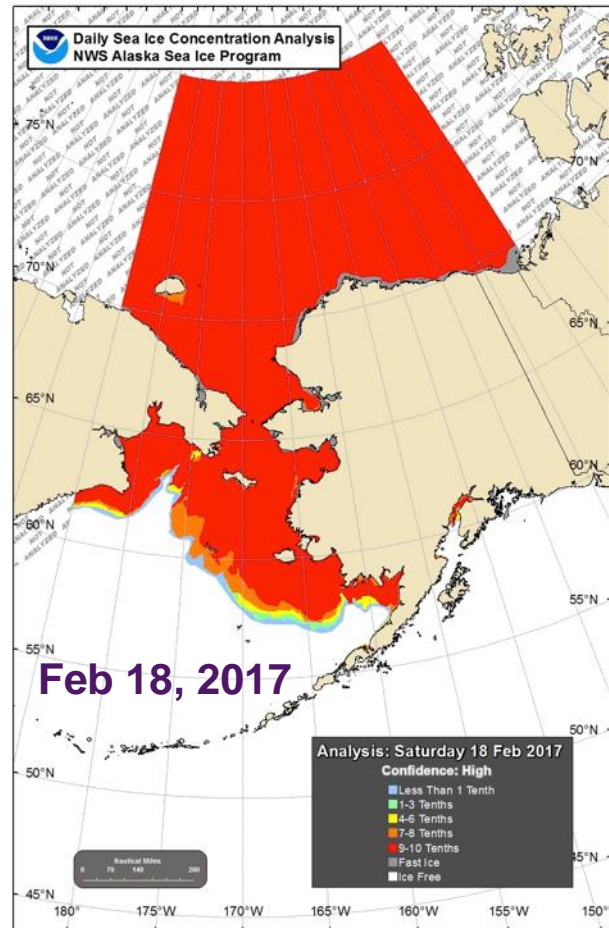
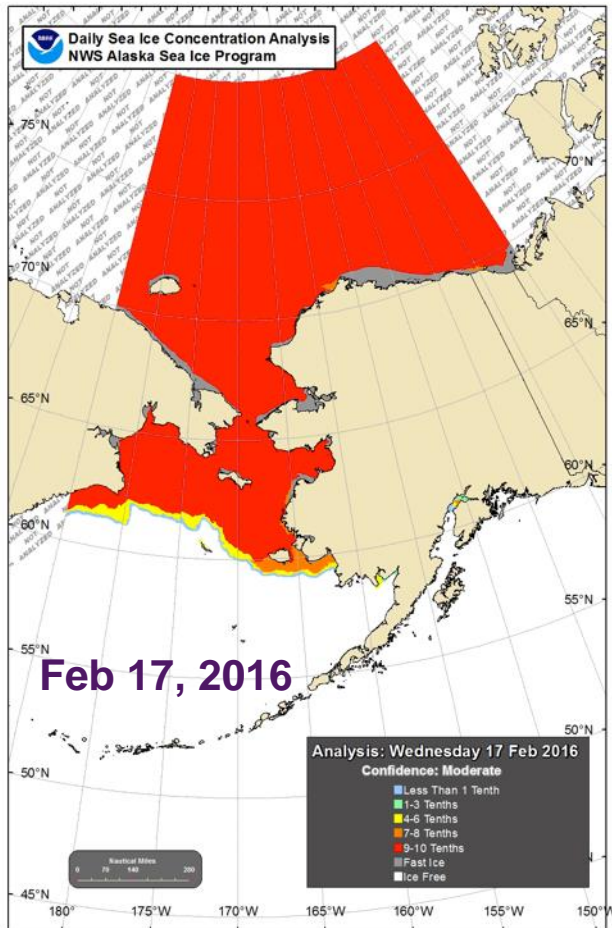


Snowpack Early February

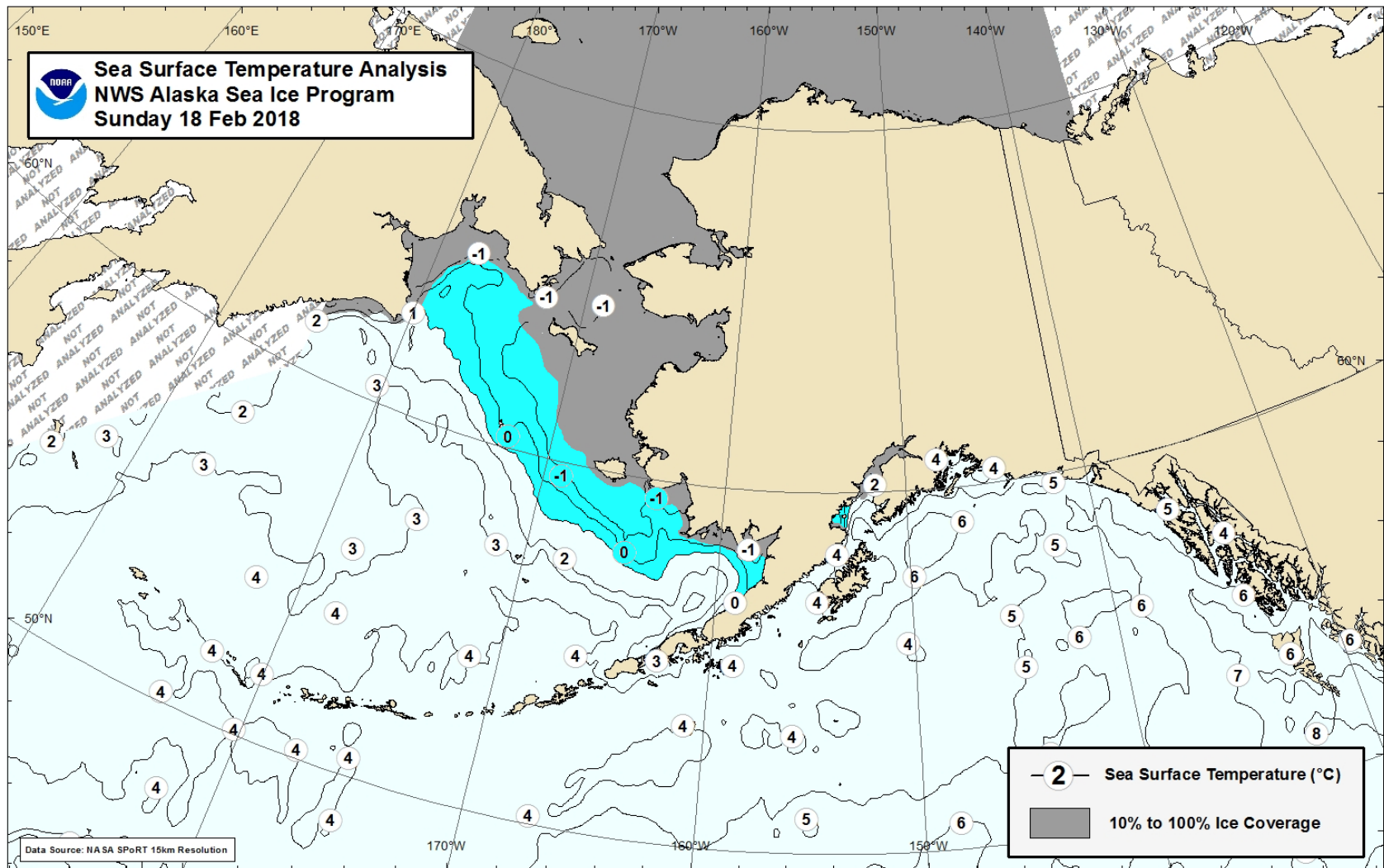


February 18, 2018

Recent Mid-February Ice Concentration

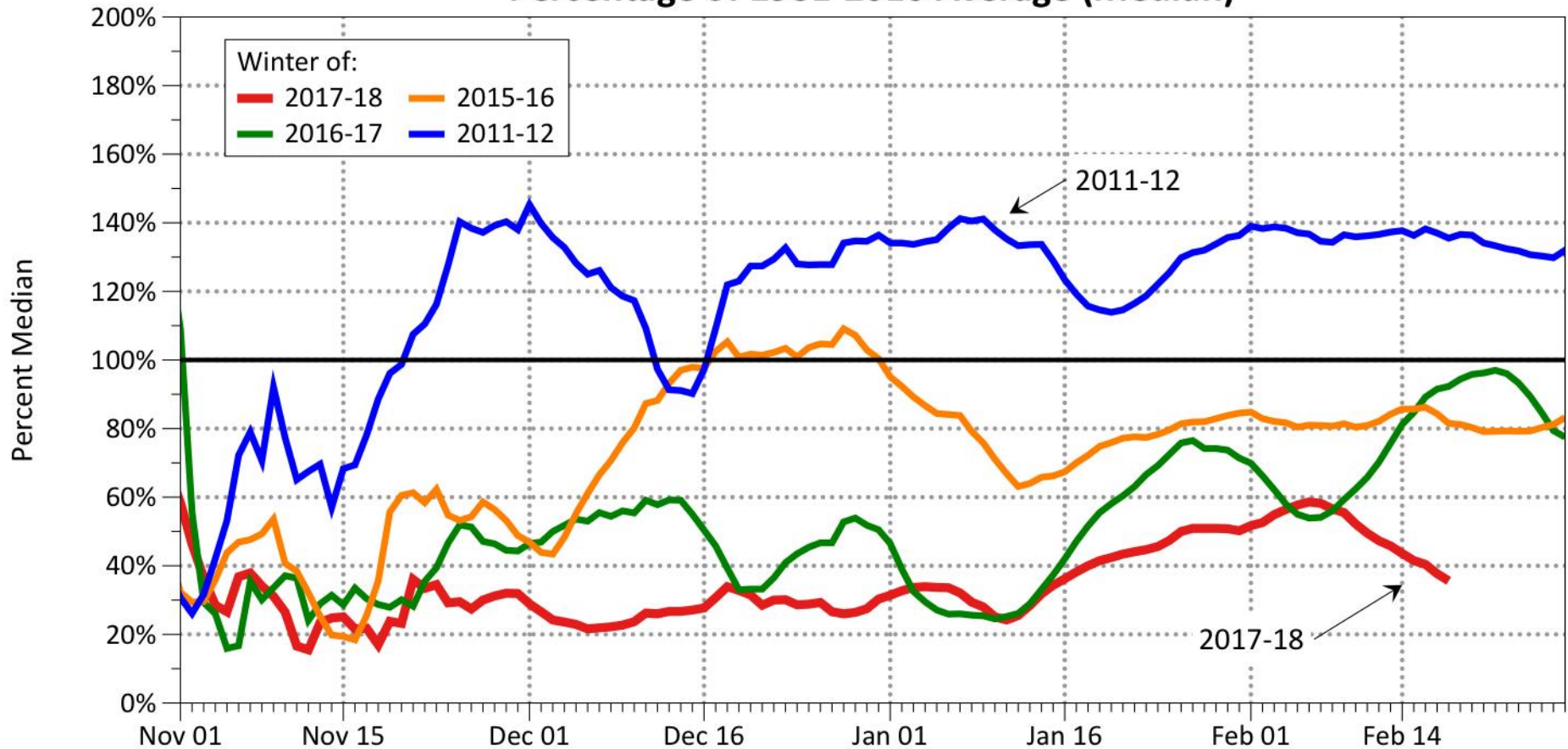


Sea-Surface Temperatures



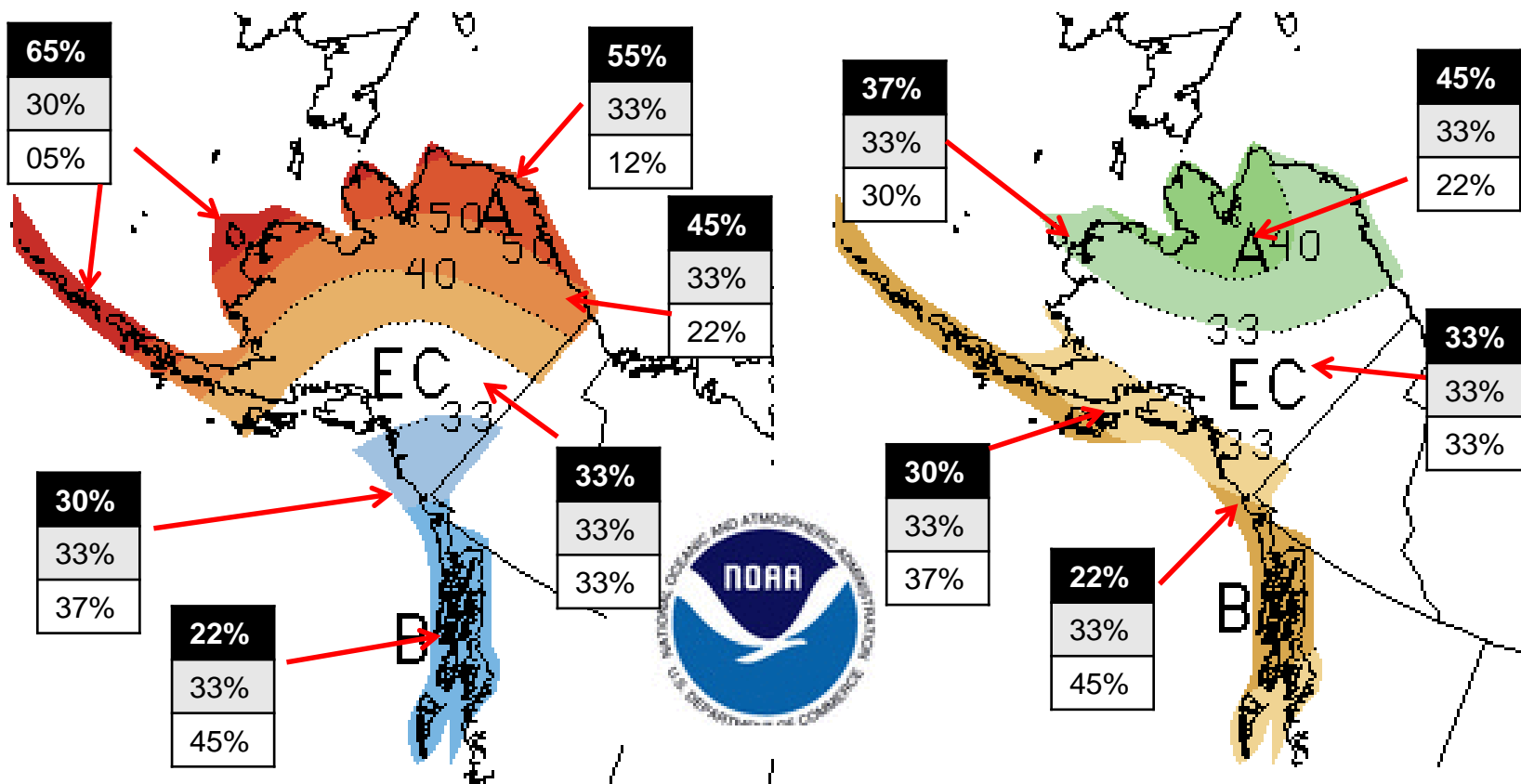
Bering Sea Ice Extent

Bering Sea Daily Ice Extent
Percentage of 1981-2010 Average (Median)



Data source: NSIDC Regional Sea Ice Index v3
Updated through Feb 18, 2018

CPC Mar-Apr-May 2018 Outlook



THREE-MONTH OUTLOOK
 TEMPERATURE PROBABILITY
 0.5 MONTH LEAD
 VALID MAM 2018
 MADE 15 FEB 2018

THREE-MONTH OUTLOOK
 PRECIPITATION PROBABILITY
 0.5 MONTH LEAD
 VALID MAM 2018
 MADE 15 FEB 2018

Above%
Normal%
Below%

